

**CASE II**  
AGRICULTURE  
THE HEART OF FARMING BEATS RED

# FRONT END LOADERS AND ATTACHMENTS





# FARMALL B

PARTNERED WITH A PRIME-LIFT C FRONT END LOADER

Case IH Farmall B partnered with a Prime-Lift C front end loader make the ideal couple. These front end loaders are designed for Australian conditions featuring excellent visibility, durable performance and solid construction that allows you to handle bigger tasks and longer hours. The mechanical level lift system is the best form of operator protection against “rollback” and is designed to meet latest standards for Supply and Manufacture of Front End Loaders. Designed with service access and visibility in mind the excellent visibility to the bucket is thanks to the loaders mid-mount design, narrow boom arms and small uprights. All key pivot points are fitted with heavy-duty bushes. These can all be lubricated from the side of the loader, with easy to see recessed grease points.

**PRIME-LIFT C FRONT END LOADERS** can be fitted with a choice of general purpose or multipurpose (4-in-1) bucket designs which enable you to move and collect soil, mulch and gravel easily and neatly.

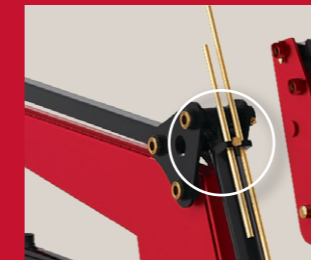
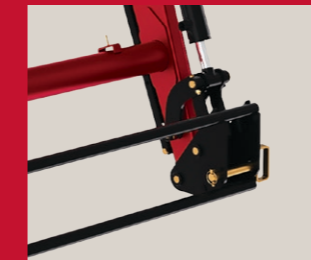
## 3RD SERVICE OPTION

The 3rd service allows the operator to remotely operate an additional hydraulic circuit on an attachment. This is controlled by the operator from a switch on the joystick.

## HYDRO RIDE OPTION

Hydro ride provides a smoother, cushioned ride by reducing the energy transfer back and forth between the loader and the tractor. The kit installs cleanly and does not restrict the operator's vision. This option is available for Prime-Lift 10C or larger.

AVAILABLE FRONT END LOADERS	PRIME-LIFT 05C	PRIME-LIFT 10C	PRIME-LIFT 15C	PRIME-LIFT 25C
Horse power range (approximate)	21-28hp	26-35hp	34-45hp	45-60hp
Lift capacity (maximum lift height)	323kg	497kg	731kg	1242kg
Mechanical self levelling			Standard	
Easy detach loader frame			Standard	
Manual locking attachment quickcoupler		Standard		-
Auto locking attachment quickcoupler		-		Standard
3rd service			Optional	
Hydro ride	-		Optional	



**MULTI-ATTACH QUICKCOUPLER**  
Alternate attachments with the multi-attach quickcoupler system on the Prime-Lift C.

**ATTACHMENT LEVELLING GAUGE**  
Quickly level your attachment with the easy-to-use levelling gauge on the Prime-Lift C.

**EASY DETACH LOADER FRAME**  
Attaching or removing your front end loader from your tractor is simple with a Prime-Lift C.

**GENERAL PURPOSE BUCKET**  
Designed to meet the high strength and safety requirements of today's environment. When attached to one of our front end loaders there is no rollback.

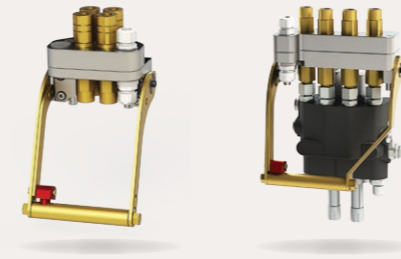
**MULTIPURPOSE (4-IN-1) BUCKET**  
For the ultimate in versatility, the multipurpose 4-in-1 bucket when fitted with 3rd service, it becomes more than a bucket; it's a blade, a grab and a grader as well.

**3-POINT LINKAGE COUNTERWEIGHT**  
A 3-point linkage counterweight is highly recommended with your front end loader to ensure stability, improve safety and performance of your equipment.



# FARMALL JX

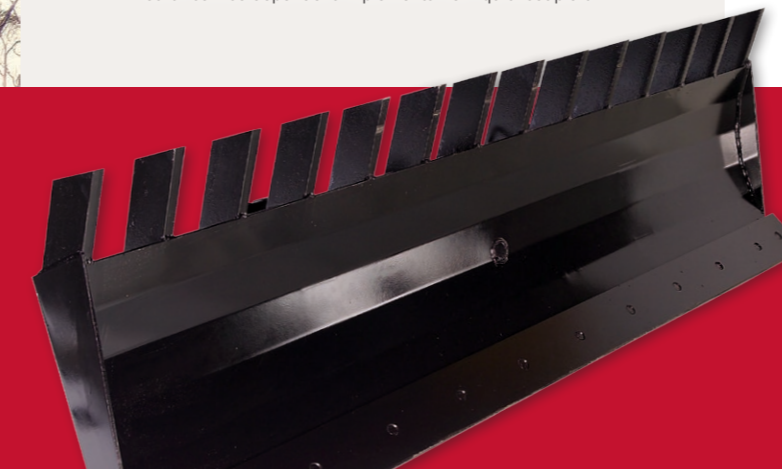
Our front end loaders have a selection of options such as 3rd and 4th service, hydro ride and multicouplers, when combined with our vast range of attachments, versatility of your front end loader is increased.



### MULTICOUPLERS OPTION

The multicoupler is useful for easier hydraulic coupling of the loader, on and off the tractor. The use of a multicoupler also increases operator ease of use when changing third and fourth service dependent implements from quickcouplers.

AVAILABLE FRONT END LOADERS	PRIME-LIFT 25C	PRIME-LIFT 30	PRIME-LIFT 40	VISION-LIFT 35S	VISION-LIFT 45S
Horse power range (approximate)	45-60hp	55-90hp	75-110hp	50-90hp	75-110hp
Lift capacity (maximum lift height)	1,242kg	1,475kg	2,010kg	1,505kg	2,156kg
Mechanical self levelling			Standard		
Easy detach loader frame			Standard		
Auto locking attachment quickcoupler			Standard		
3rd service		Optional		Standard	
4th service			Optional		
Hydro ride			Optional		
Multicoupler			Optional		



## BULL BLADE ATTACHMENT

The bull blades are available with root rakes allowing ripping and removal of roots. When utilising its other configurations, the bull blade can level loose material and manage water runoff gradients. The bull blade can be inverted through an adaptor on the rear of the blade. This will position the rake tines towards the ground, allowing ripping and removal of small tree and shrub roots from beneath the ground surface. Alternatively, when pushing up debris, the tines allow topsoil to be left behind.

The bull blade can also be set up with a manual angle adjustment and a manual tilt adjustment. These are set through brackets supplied and attached to the back of the blade, allowing the operator to change from a standard configuration to either or both angle and tilt options. The bull blade can also be set up with a manual angle adjustment and a hydraulic tilt adjustment. The manual angle is set using the bracket supplied and attached to the back of the blade. The tilt is controlled through a hydraulic third service which the operator can control during use.

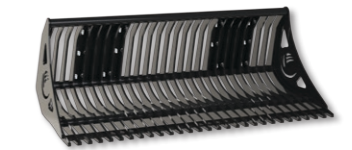
## BUCKET ATTACHMENTS

Buckets are a useful tool for collecting, lifting and moving materials around the farm. Different types of buckets get particular jobs done right and safely. Just to name a few, light material bucket, rock bucket and silage grab bucket, are all specialised in handling certain materials.



### SILAGE GRAB BUCKET

The silage grab bucket has been designed to handle loose or fine chop silage and is ideal for cleaning up other loose materials such as straw.



### ROCK BUCKET

Useful for levelling, general clean up, sifting rocks and other debris from soil leaving clean fill that can be used for other purposes, and more.



### LIGHT MATERIAL BUCKET

With many similarities to the general purpose bucket, the light material bucket allows for higher volume of lighter material such as grain.



# FARMALL C

The Prime-Lift front end loaders have stood the test of time and provide customers with a front end loader range that meets performance requirements whilst also providing a more economical product.

Prime-Lift front end loaders have been operating on farms for many years and are a proven performer. With extra options available for increased functionality, it is a complete loader offering with many valuable features that will compliment your tractor usage and versatility.

AVAILABLE FRONT END LOADERS	PRIME-LIFT 25C	PRIME-LIFT 30	PRIME-LIFT 40	VISION-LIFT 35S	VISION-LIFT 45S
Horse power range (approximate)	45-60hp	55-90hp	75-110hp	50-90hp	75-110hp
Lift capacity (maximum lift height)	1,242kg	1475kg	2010kg	1505kg	2156kg
Mechanical self levelling			Standard		
Easy detach loader frame			Standard		
Auto locking attachment quickcoupler			Standard		
3rd service		Optional		Standard	
4th service			Optional		
Hydro ride			Optional		
Multicoupler			Optional		

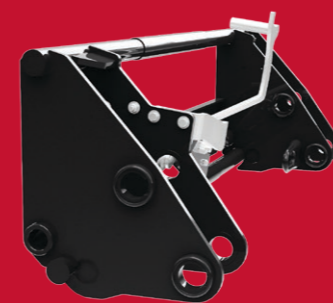


## BUMP OR GRILLE GUARD OPTION

Protect the front of your investment with a bump guard or grille guard. Some tractor models have available, the fold down grille guard, this provides a more compact and functional design.



## AUS & EURO HITCH SYSTEMS AVAILABLE



### AUS HITCH

The Aus Hitch quickcoupler is a specifically designed attachment system used for coupling all attachments, using the Aus Hitch system, quickly and efficiently. The quickcoupler uses a single lever action to disengage the locking pins from the attachment and has a spring return auto lock function when reattaching to an attachment. The Aus Hitch is designed with much larger and stronger locking pins in comparison to the Euro Hitch.



### EURO HITCH

The Euro Hitch quickcoupler has been developed to allow those customers, who may have previously purchased European-style attachments that suit some of the European-manufactured loaders, the ability to retain those attachments and use them on their Prime-Lift or Vision-Lift front end loader. The quickcoupler uses a single lever action to disengage the locking pins from the attachment and has a spring return auto lock function when reattaching to an attachment.

## 3RD &/OR 4TH SERVICE OPTION

The 3rd and 4th service allows the operator to remotely operate additional hydraulic circuit(s) on an attachment. This is controlled by the operator from a button on the joystick.



# FARMALL U

One of the unique loader attachments available for the Prime-Lift and Vision-Lift front end loaders is the Power Log Grab. This attachment enables operators to clean up scrub and logs, is useful for unloading or loading fence posts, transporting and removal of dead branches from the paddock and other farming activities.



## POWER IS JUST THE BEGINNING

The power log grab has loader attachment lugs welded directly to the attachment frame making it a stand-alone attachment to allow for quick efficient changeover. A third service is required to activate the grab arm of the attachment. Additional pallet forks are available to increase the load bearing surface area.



Choose from two types of loaders depending on your needs; economical Prime-Lift or superior Vision-Lift.

AVAILABLE FRONT END LOADERS	PRIME-LIFT 40	PRIME-LIFT 50	VISION-LIFT 45S	VISION-LIFT 55S
Horse power range (approximate)	75-110hp	100-150hp	75-110hp	100-150hp
Lift capacity (maximum lift height)	2010kg	2182kg	2156kg	2308kg
Mechanical self levelling			Standard	
Easy detach loader frame			Standard	
Auto locking attachment quickcoupler			Standard	
3rd service	Optional			Standard
4th service			Optional	
Hydro ride			Optional	
Multicoupler			Optional	

## HYDRAULIC LOCKING QUICKCOUPLER OPTION

With the carefully designed hydraulic locking quickcoupler system fitted to your Vision-Lift front end loader, you can switch between your power log grab and another attachment with far more ease.

# MAXXUM

## VISION-LIFT LOADER & A POST HOLE DIGGER

The post hole digger includes a carriage, drive unit and auger; available in different configurations. The hydraulic post hole digger drive unit is operated by a 3rd service from the front end loader to drive whichever size auger is fitted. The operator controls the loader arms to provide downward pressure while drilling the hole, or by raising the loader arms to lift the auger out of the hole.

The post hole digger is supplied with a one piece attachment carriage. The drive unit can be positioned to the left, right or centre of the carriage to suit individual needs.

There are a number of drive units to best match the tractor's hydraulic capacity and auger sizes to suit any job. All augers come standard with replaceable tungsten carbide cutting teeth and pilot.

AVAILABLE FRONT END LOADERS	PRIME-LIFT 40	PRIME-LIFT 50	VISION-LIFT 45S	VISION-LIFT 55S	VISION-LIFT 65S
Horse power range (approximate)	75-110hp	100-150hp	75-110hp	100-150hp	140-190hp
Lift capacity (maximum lift height)	2010kg	2182kg	2156kg	2308kg	2350kg
Mechanical self levelling			Standard		
Easy detach loader frame			Standard		
Auto locking attachment quickcoupler			Standard		
3rd service	Optional			Standard	
4th service			Optional		
Hydro ride			Optional		
Multicoupler			Optional		



The figures shown are theoretical and provided as a guide only. The manufacturer accepts no responsibility/liability for any direct or indirect loss caused to person(s) who use this guide. Suitable test equipment must be used to obtain accurate values.

## SPECIFICATIONS

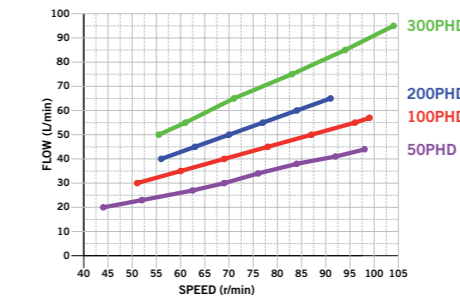
Drive Unit	50PHD	100PHD	200PHD	300PHD
Flow rate range*	20L/min-44L/min	30L/min-57L/min	40L/min-65L/min	50L/min-95L/min
Torque	1495Nm @ 205Bar	2010Nm @ 220Bar	2510Nm @ 220Bar	3500Nm @ 240Bar
Weight	57kg	54kg	54kg	60kg

\* Flow rate range refers to the flow rate delivered to the attachment. To determine the appropriate drive unit model to suit your tractor, check the tractor hydraulic specifications from your tractor manufacturer. Note: Hydraulic oil flow at the attachment may not always be equal to the total oil flow indicated in the tractor specifications.

Auger^	100ATC	150ATC	200ATC	225ATC	250ATC	300ATC	350ATC	400ATC	450ATC	600ATC
Diameter	100mm	150mm	200mm	225mm	250mm	300mm	350mm	400mm	450mm	600mm
Weight	16kg	18kg	20kg	23kg	26kg	29kg	32kg	36kg	38kg	44kg

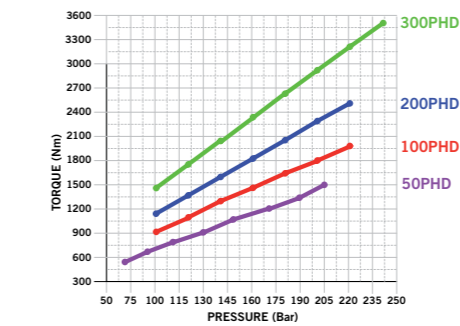
^ Auger Tungsten Carbide 'ATC'. Note: 400mm, 450mm and 600mm augers are only available for 300PHD.

## FLOW VS SPEED



50PHD		100PHD		200PHD		300PHD	
L/min	r/min	L/min	r/min	L/min	r/min	L/min	r/min
20	44	30	51	40	56	50	55.5
23	52	35	60	45	63	55	61
27	60	40	69	50	70	65	71
30	68	45	78	55	77	75	83
34	76	50	87	60	84	85	94
38	84	55	96	65	91	95	104
41	92	57	99				
44	98						

## TORQUE VS PRESSURE



50PHD		100PHD		200PHD		300PHD	
Bar	Nm	Bar	Nm	Bar	Nm	Bar	Nm
70	511	100	915	100	1141	100	1460
90	657	120	1097	120	1369	120	1752
110	803	140	1279	140	1597	140	2044
130	949	160	1461	160	1825	160	2336
150	1095	180	1643	180	2053	180	2628
170	1241	200	1825	200	2281	200	2920
190	1387	220	2007	220	2509	220	3212
205	1496					240	3504



# PUMA

## VISION-LIFT FRONT END LOADER

Flush pin design and hidden hydraulic hoses increases loader to tractor clearances and provides clean boom arm surfaces free from hoses, brackets, fittings and other components.

The cross bar cover design is made with a heavy duty high-density polyethylene material, protecting hoses and valving mounted underneath the cover. This stylish cover is designed to maximise operator vision.

### 1 CHALLENGE LEVEL LIFT TECHNOLOGY (CLT)

As a world-first, Challenge Implements has developed the patent pending CLT™ front end loader levelling system with an innovative internal self-levelling linkage enclosed inside the loader boom.

With years of development, Challenge is able to conceal the linkage inside the boom arm which gives the loader a better appearance and gains between 240mm to 260mm of increased vision. This makes for a streamlined and compact front end loader, while continuing to offer safety to the operator with the use of advanced level-lifting technology.

### 2 FRAME STAND FASTENING SYSTEM

The patent pending Auto Cam Lock and Fast Lock frame stand system, included with the Vision-Lift series front end loader, provides operational savings by reducing the time and effort required when detaching and reattaching the front end loader from the tractor.

There are no components that have to come away from the loader as the automatic locking features are all built into the design. Reattaching the loader is now a very quick, automated process. Once the hydraulic hoses have been connected, the operator can completely attach and secure the loader without leaving the tractor seat.

### 3 ENHANCED ENGINEERING STRENGTH (EES)

With the development of the patented EES™ system, the Vision-Lift loader now has greater strength while also allowing the entry and exit points of the hydraulic hoses and wiring harness. One of the main areas of any front end loader that needs extra strength is the cross bar that joins the two boom arms together.

The new EES™ cross bar system offers an added total of a 56% increase in cross bar re-enforcement, now allowing a total of six high-penetration welds from the boom points that protects and guides the hoses and wiring within the loader boom arm. These castings have been designed to offer maximum strength to the surrounding area of the hydraulic hose entry and exit points.



AVAILABLE FRONT END LOADERS	PRIME-LIFT 50	VISION-LIFT 55S	VISION-LIFT 65S	VISION-LIFT 75
Horse power range (approximate)	100-150hp	100-150hp	140-190hp	170-220hp
Lift capacity (maximum lift height)	2182kg	2308kg	2350kg	2610kg
Mechanical self levelling			Standard	
Easy detach loader frame			Standard	
Auto locking attachment quickcoupler			Standard	
3rd service	Optional		Standard	
4th service			Optional	
Hydro ride			Optional	
Multicoupler			Optional	

The cross bar cover design is made with a heavy duty high-density polyethylene material, protecting hoses and valving mounted underneath the cover. This stylish cover is designed to maximise operator vision.



# MAGNUM

CONTINUOUSLY DEPENDABLE. CONSISTENTLY EXTRAORDINARY.

Magnum Series tractors combine performance, comfort and reliability. Designed with you in mind, a superior operator experience is delivered through a quiet and comfortable luxury cab. With power and transmission options to make your machine ready for a variety of applications, the Magnum is ready for work all year round. Case IH continues to raise the bar higher to provide the most intuitive and efficient operation available. Magnum Series tractors have been a staple of machine fleets since 1987.

AVAILABLE FRONT END LOADER (FOR TIER 4)	VISION-LIFT 85
Horse power range (approximate)	220-340hp
Lift capacity (maximum lift height)	2715kg
Mechanical self levelling	Standard
Easy detach loader frame	Standard
Auto locking attachment quickcoupler	Standard
3rd service	Standard
4th service	Optional
Hydro ride	Optional
Multicoupler	Optional



## HAY HANDLING ATTACHMENTS

One of the front end loaders more popular tasks on a large property is lifting, carrying and stacking hay bales. With a large range of hay handling attachments for our front end loaders, this job is made simple. Maximise safety and efficiency by combining these attachments with other products.



**ROUND BALE SPIKE & ROUND BALE FORK**  
With a simple tine change you have two attachments in one. Both attachments are designed to handle a single bale.



**DUAL ROUND BALE SPIKE**  
Consider a 3-point linkage dual round bale spike to double the amount of bales you can handle at one time, totalling up to 6 bales.



**SQUARE BALE SPIKE**  
Ideal for handling square bales, this attachment comes as two types, standard and extra wide ideal for export hay bales.



**3-POINT LINKAGE ROUND BALE SPIKE**  
This attachment combined with a round bale spike attached to your loader, increases your efficiency and maintains safety.

## SILAGE HANDLING ATTACHMENTS

Lifting, carrying and stacking silage is made a lot easier with our selection of silage handling attachments. Some of these attachments are designed with smooth surfaces which is ideal for preventing damage to wrapped silage.



**WRAPPED ROUND SILAGE GRAB**  
This attachment is designed to allow the smooth and efficient handling of wrapped silage bales and round hay bales.



**POWER SILAGE GRAB**  
Handling pit silage easily and safely. This attachment requires a 3rd service to activate the grab portion of the attachment.







**SILAGE FORK**  
The silage fork is ideal for handling pit silage and other light materials. The tines are fitted into a tapered sleeve and are removable.



**SQUARE WRAPPED SILAGE GRAB**  
This attachment is designed to allow the smooth and efficient handling of wrapped square silage bales and square hay bales.





    [caseih.com](http://caseih.com)

SAFETY NEVER HURTS!<sup>™</sup> Always read the Operator's Manual before operating any equipment. Inspect equipment before using it, and be sure it is operating properly. Follow the product safety signs, and use any safety features provided. CNH Industrial Australia Pty Ltd reserves the right to make improvements in design and changes in specifications at any time without notice and without incurring any obligation to install them on units previously sold. Specifications, descriptions and illustrative material herein are as accurate as known at time of publication, but are subject to change without notice. Availability of some models and equipment builds varies according to the country in which the equipment is used. ©2016 CNH Industrial Australia Pty Ltd. All rights reserved. Case IH, its respective logos and the red, black and grey color scheme, as well as corporate and product identity used herein, are trademarks of CNH Industrial N.V. and may not be used without permission. Case IH is a trademark registered in the United States and many other countries, owned by or licensed to CNH Industrial N.V., its subsidiaries or affiliates. Printed in Australia. [www.caseih.com](http://www.caseih.com)

**CASE IH**  
AGRICULTURE  
THE HEART OF FARMING BEATS RED