



ZT X

Parts Manual

Models:

915255 – ZT X 42
(SN 060000 +)

915256 – ZT X 52
(SN 060000 +)

915257 – ZT X 52
(SN 060000 +)

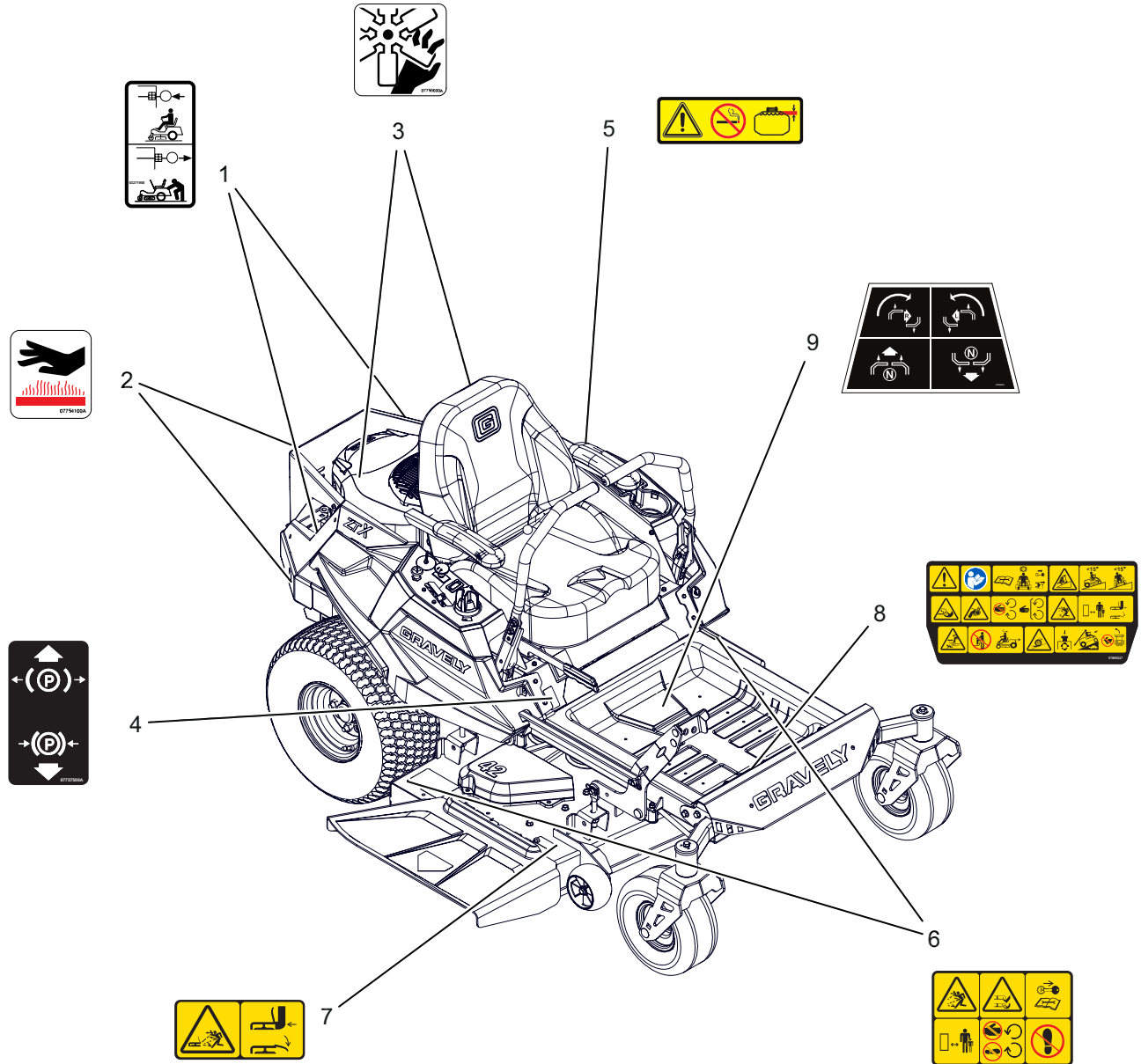
915276 – ZT X 48
(SN 000101 +)

TABLE OF CONTENTS

| | |
|--|----|
| Decals – Safety | 3 |
| Decals – Style – 42" | 4 |
| Decals – Style – 48" | 5 |
| Decals – Style – 52" | 6 |
| Frame | 7 |
| Engine – Kohler 22 HP | 8 |
| Engine – Kohler 24 HP | 9 |
| Engine – Kawasaki FR691 | 10 |
| Engine – Kawasaki FR651 | 11 |
| Seat | 12 |
| Fenders | 13 |
| Fuel System – Kohler | 14 |
| Fuel System – Kawasaki | 15 |
| Control Panel..... | 16 |
| Electrical | 17 |
| Wiring Diagram..... | 18 |
| Front Caster Wheels..... | 19 |
| Rear Tires and Transaxles – 42" | 20 |
| Rear Tires and Transaxles – 48" and 52"..... | 21 |
| Transaxle Drive | 22 |
| Controls | 23 |
| Parking Brake | 24 |
| Deck Lift..... | 25 |
| Height of Cut..... | 26 |
| Deck Mount | 27 |
| Deck, Belt, Blades and Spindles – 42" | 28 |
| Deck, Belt, Blades and Spindles – 48" | 29 |
| Deck, Belt, Blades and Spindles – 52" | 30 |
| Idlers and Sheaves – 42" | 31 |
| Idlers and Sheaves – 48" | 32 |
| Idlers and Sheaves – 52" | 33 |
| Anti-Scalp Rollers – 42" | 34 |
| Anti-Scalp Rollers – 48" | 35 |
| Anti-Scalp Rollers – 52"..... | 36 |
| Belt Covers – 42"..... | 37 |
| Belt Covers – 48"..... | 38 |
| Belt Covers – 52"..... | 39 |
| Chute | 40 |

DECALS – SAFETY

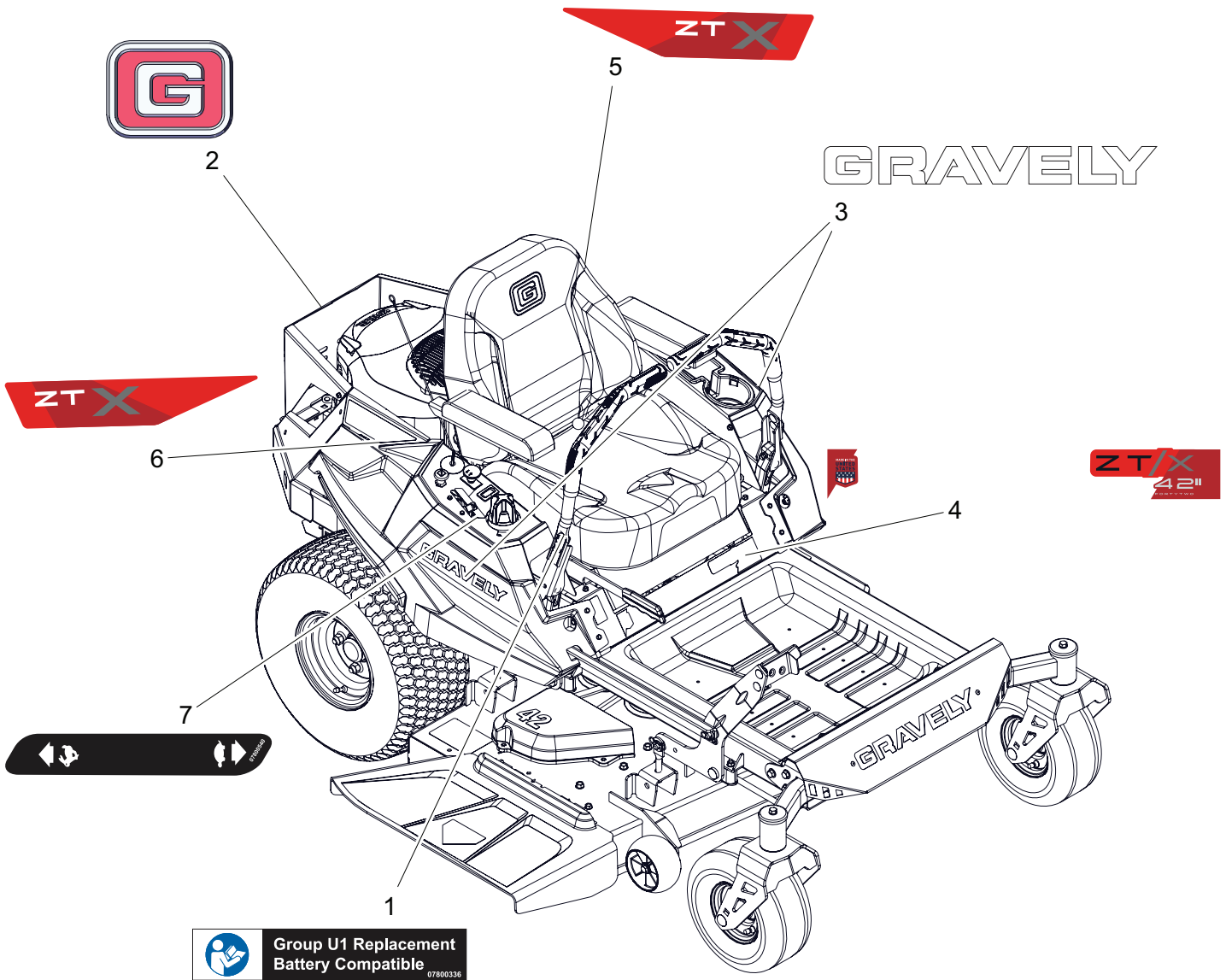
Models All



| BOM ID | Number | Qty | Description |
|--------|----------|-----|--------------------------------|
| 1 | 03271900 | 2 | DECAL, TRANSMISSION DISCONNECT |
| 2 | 07754100 | 2 | DECAL, HOT SURFACE |
| 3 | 07756000 | 2 | DECAL, DANGER - FAN |
| 4 | 07757500 | 1 | DECAL, PARKING BRAKE LEVER |
| 5 | 07800820 | 1 | DECAL, FUEL WARNING |
| 6 | 07800340 | 2 | DECAL, SAFETY - MOWER DECK |
| 7 | 07800402 | 1 | DECAL, SAFETY - DECK GUARDING |
| 8 | 07800537 | 1 | DECAL, SAFETY - IKON ZTX |
| 9 | 07800541 | 1 | DECAL, INSTRUCTION - STEERING |

DECALS – STYLE – 42"

Models 915255

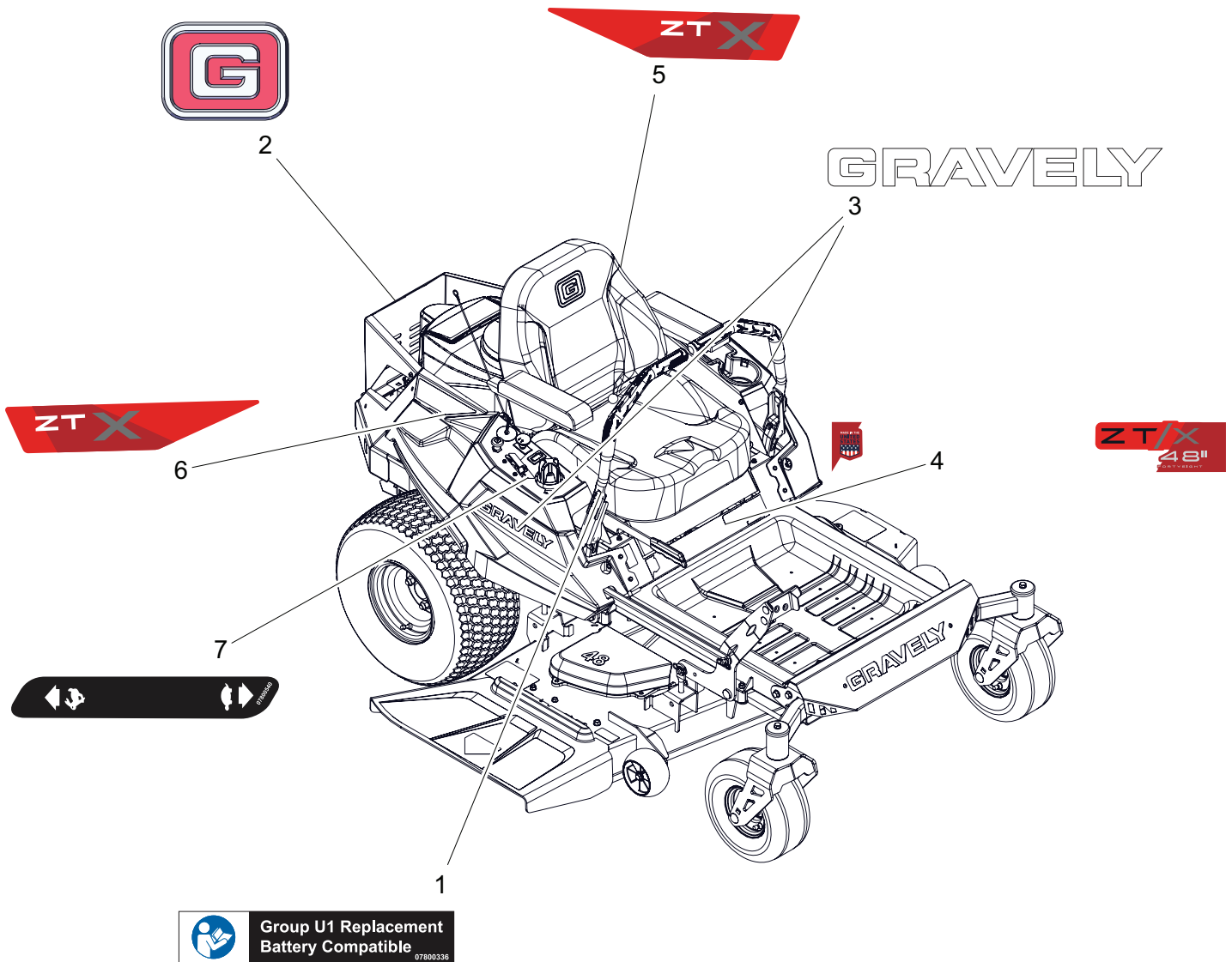


 Group U1 Replacement
Battery Compatible
07800336

| BOM ID | Number | Qty | Description |
|--------|----------|-----|---|
| 1 | 07800336 | 1 | DECAL, INSTRUCTION - U1 REPLACEMENT BATTERY |
| 2 | 07800534 | 1 | DECAL, GRAVELLY BRAND |
| 3 | 07800618 | 2 | DECAL, 9.5" GRAVELLY LOGO |
| 4 | 07801325 | 1 | DECAL, ZTX - 42 |
| 5 | 07801423 | 1 | DECAL, FENDER - ZTX LEFT |
| 6 | 07801424 | 1 | DECAL, FENDER - ZTX RIGHT |
| 7 | 07800540 | 1 | DECAL, DASH |

DECALS – STYLE – 48"

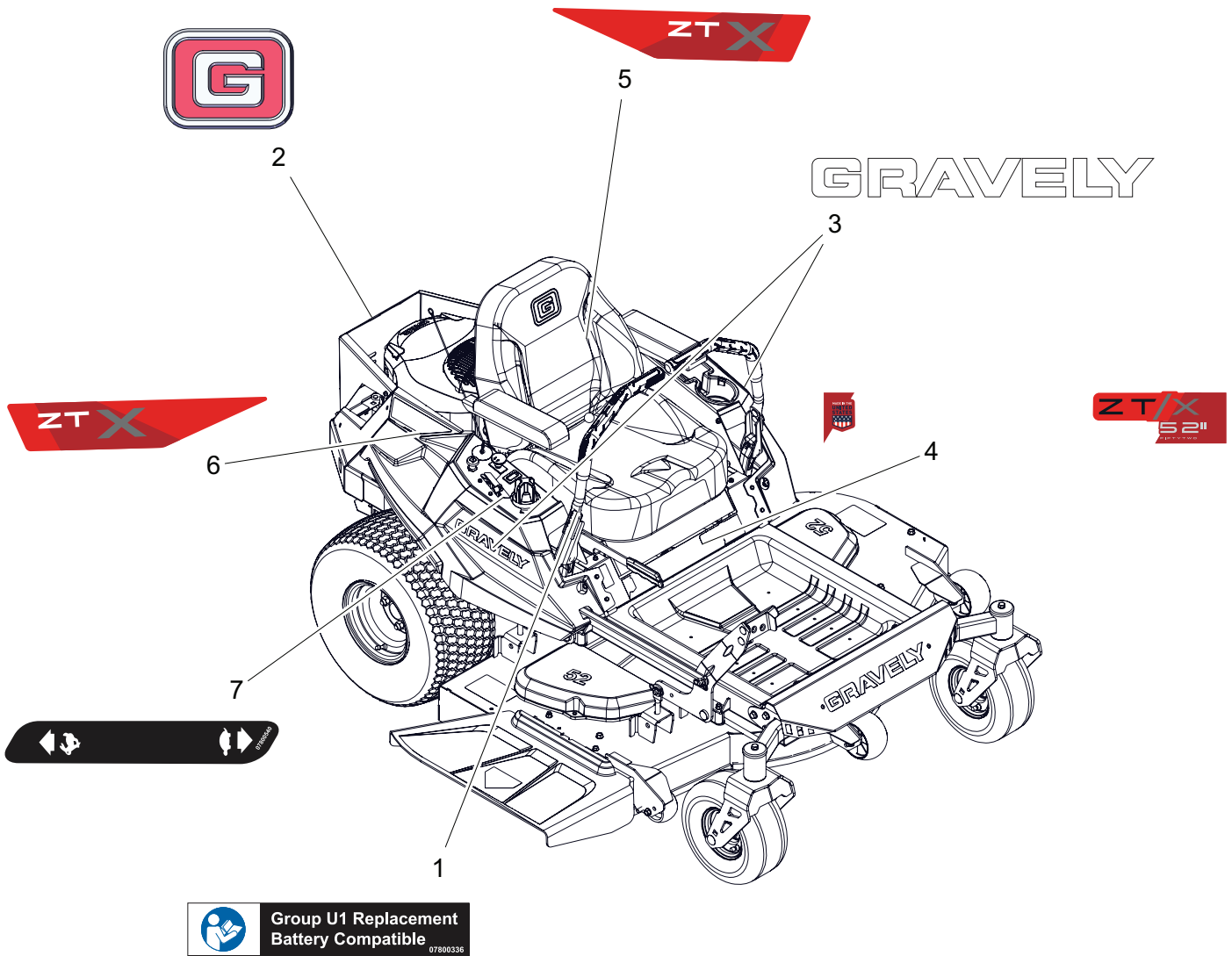
Models 915276



| BOM ID | Number | Qty | Description |
|--------|----------|-----|---|
| 1 | 07800336 | 1 | DECAL, INSTRUCTION - U1 REPLACEMENT BATTERY |
| 2 | 07800534 | 1 | DECAL, GRAVELLY BRAND |
| 3 | 07800618 | 2 | DECAL, 9.5" GRAVELLY LOGO |
| 4 | 07801326 | 1 | DECAL, ZTX - 48 |
| 5 | 07801423 | 1 | DECAL, FENDER - ZTX LEFT |
| 6 | 07801424 | 1 | DECAL, FENDER - ZTX RIGHT |
| 7 | 07800540 | 1 | DECAL, DASH |

DECALS – STYLE – 52"

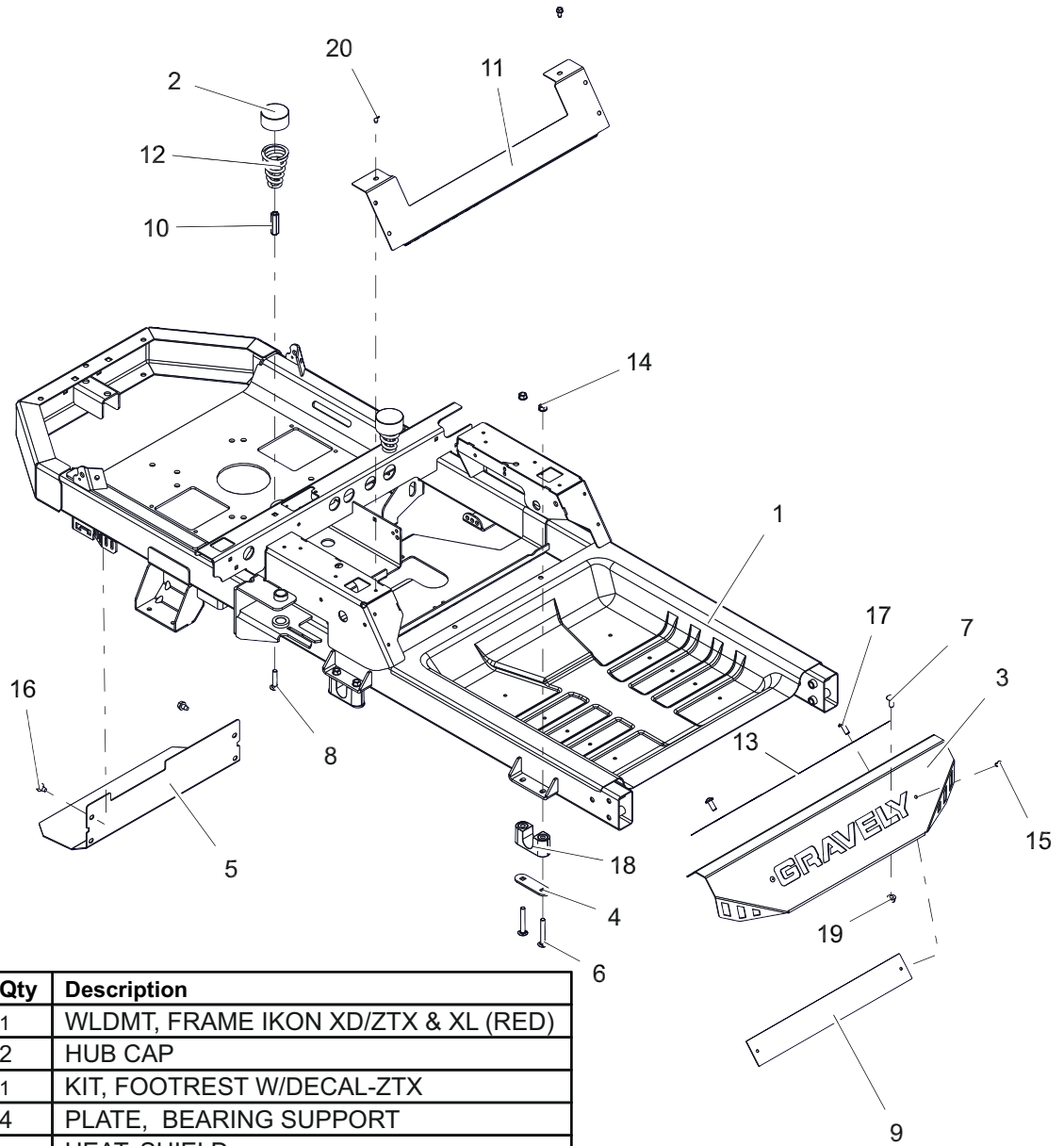
Models 915256, 257



| BOM ID | Number | Qty | Description |
|--------|----------|-----|---|
| 1 | 07800336 | 1 | DECAL, INSTRUCTION - U1 REPLACEMENT BATTERY |
| 2 | 07800534 | 1 | DECAL, GRAVELY BRAND |
| 3 | 07800618 | 2 | DECAL, 9.5" GRAVELY LOGO |
| 4 | 07801327 | 1 | DECAL, ZTX - 52 |
| 5 | 07801423 | 1 | DECAL, FENDER - ZTX LEFT |
| 6 | 07801424 | 1 | DECAL, FENDER - ZTX RIGHT |
| 7 | 07800540 | 1 | DECAL, DASH |

FRAME

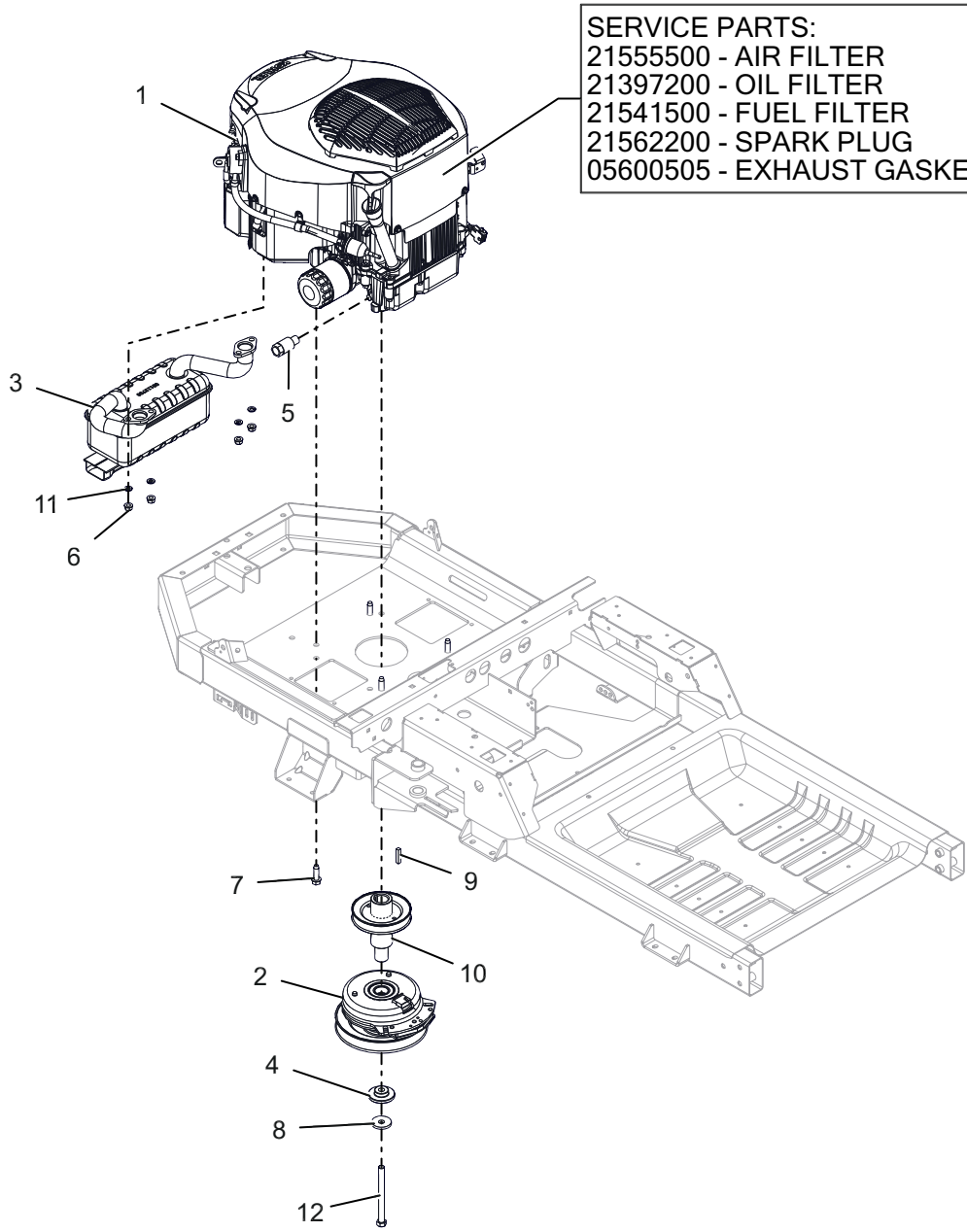
Models All



| BOM ID | Number | Qty | Description |
|--------|----------|-----|-------------------------------------|
| 1 | 51535100 | 1 | WLDMT, FRAME IKON XD/ZTX & XL (RED) |
| 2 | 00337700 | 2 | HUB CAP |
| 3 | 51527600 | 1 | KIT, FOOTREST W/DECAL-ZTX |
| 4 | 04766551 | 4 | PLATE, BEARING SUPPORT |
| 5 | 04807951 | 1 | HEAT, SHIELD |
| 6 | 06200311 | 2 | BTL,RHSSN .313-18 X 2.25 G5 ZCC |
| 7 | 06200232 | 2 | BTL,RHSN .313-18 X 0.75 G5 ZCC |
| 8 | 06200233 | 2 | BTL,RHSN .313-18 X 1.5 G5 ZCC |
| 9 | 04718451 | 1 | PLATE, BACK |
| 10 | 06500927 | 2 | NUT, COUPLER 5/16-18 x 1.75 |
| 11 | 04772353 | 1 | PLATE, SEAT KICK |
| 12 | 08300021 | 2 | SPRG, COMPRESSION |
| 13 | 05112300 | 1 | GRIP, FOOT PLATE |
| 14 | 06500840 | 8 | NUT, FLG-CTR LK .312-18 GR5 ZCC |
| 15 | 06800107 | 2 | RVT-POP .187x.375 (#66) BLACK |
| 16 | 07400124 | 2 | SCR-TAP .312-18X.50 HWH ZCC |
| 17 | 07400134 | 2 | SCR-RDHDSKTAP .31-18X.75 |
| 18 | 07500327 | 4 | BSHG, DECK |
| 19 | 06500904 | 2 | NUT, FLG-TOP LK .312-18 GR5 ZCC |
| 20 | 07400122 | 2 | SCR-TAP .25-20X.50 HWH ZCC |

ENGINE – KOHLER 22 HP

Models 915255

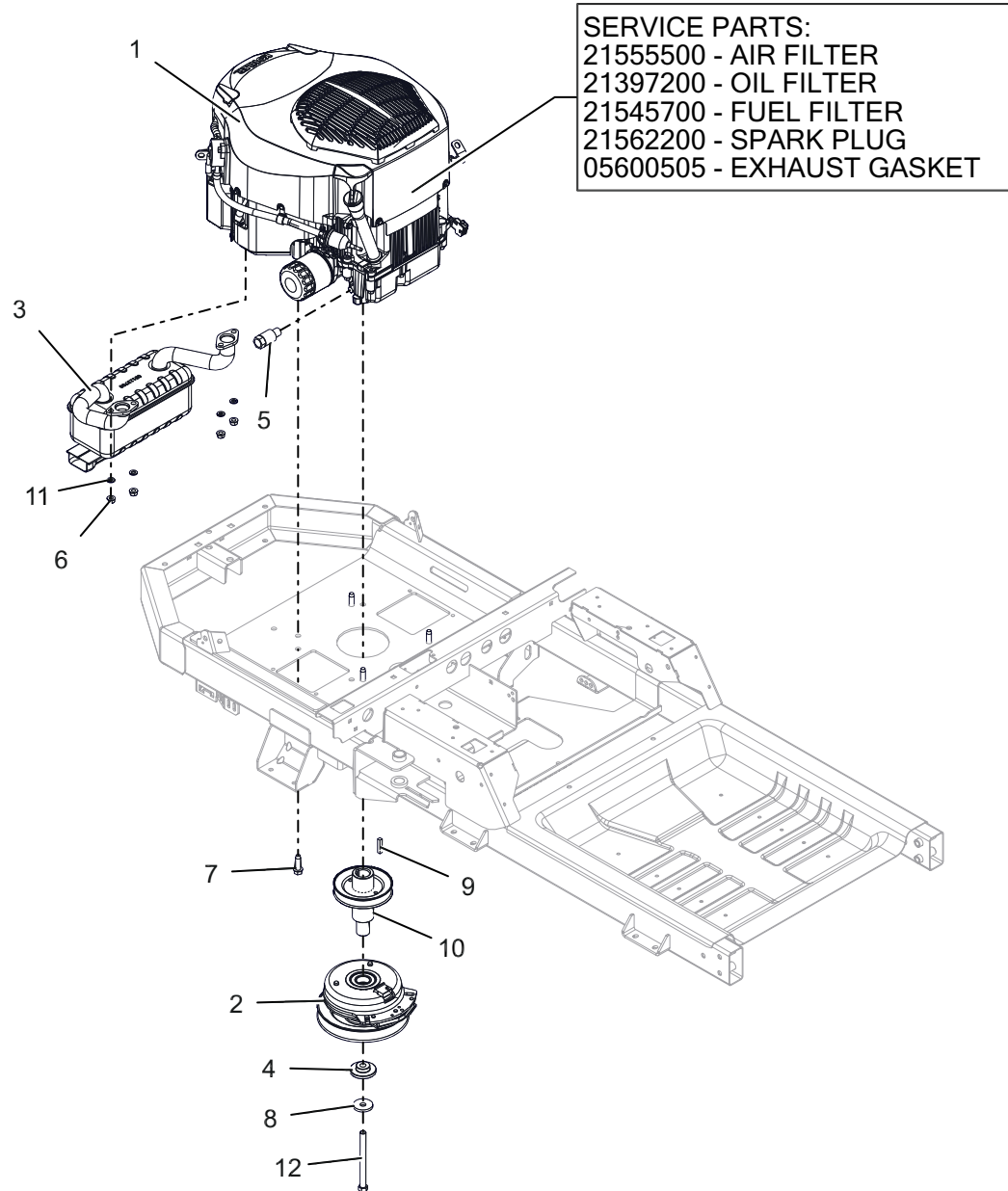


SERVICE PARTS:
 2155500 - AIR FILTER
 21397200 - OIL FILTER
 21541500 - FUEL FILTER
 21562200 - SPARK PLUG
 05600505 - EXHAUST GASKET

| BOM ID | Number | Qty | Description |
|--------|----------|-----|---------------------------------------|
| 1 | 08201140 | 1 | ENGINE, KOHLER 22HP TWIN |
| 2 | 04678300 | 1 | CLUTCH, ELEC 105 FT LB MONOPOLE 6.83" |
| 3 | 05113700 | 1 | MUFFLER, KOHLER |
| 4 | 05501206 | 1 | BSHG, -FLG .469 x 1.06 x .574 x 2.0 |
| 5 | 03943600 | 1 | DRAIN, OIL |
| 6 | 06500904 | 4 | NUT, FLG-TOP LK .312-18 GR5 ZCC |
| 7 | 07400128 | 4 | SCR-TAP .38-16X1.25 HWH ZCC |
| 8 | 06400936 | 1 | WSHR, 7/16" SPRING DISC |
| 9 | 06603400 | 1 | KEY-SQ .250X.250X1.250 |
| 10 | 07350400 | 1 | WLDMT, DRIVE SHEAVE (LONG) |
| 11 | 06300119 | 4 | WSHR,LK-REG 0.314 X 0.078 ZCC |
| 12 | 05901823 | 1 | BLT, HEX 0.4375-20X5 G8 ZCC NT |

ENGINE – KOHLER 24 HP

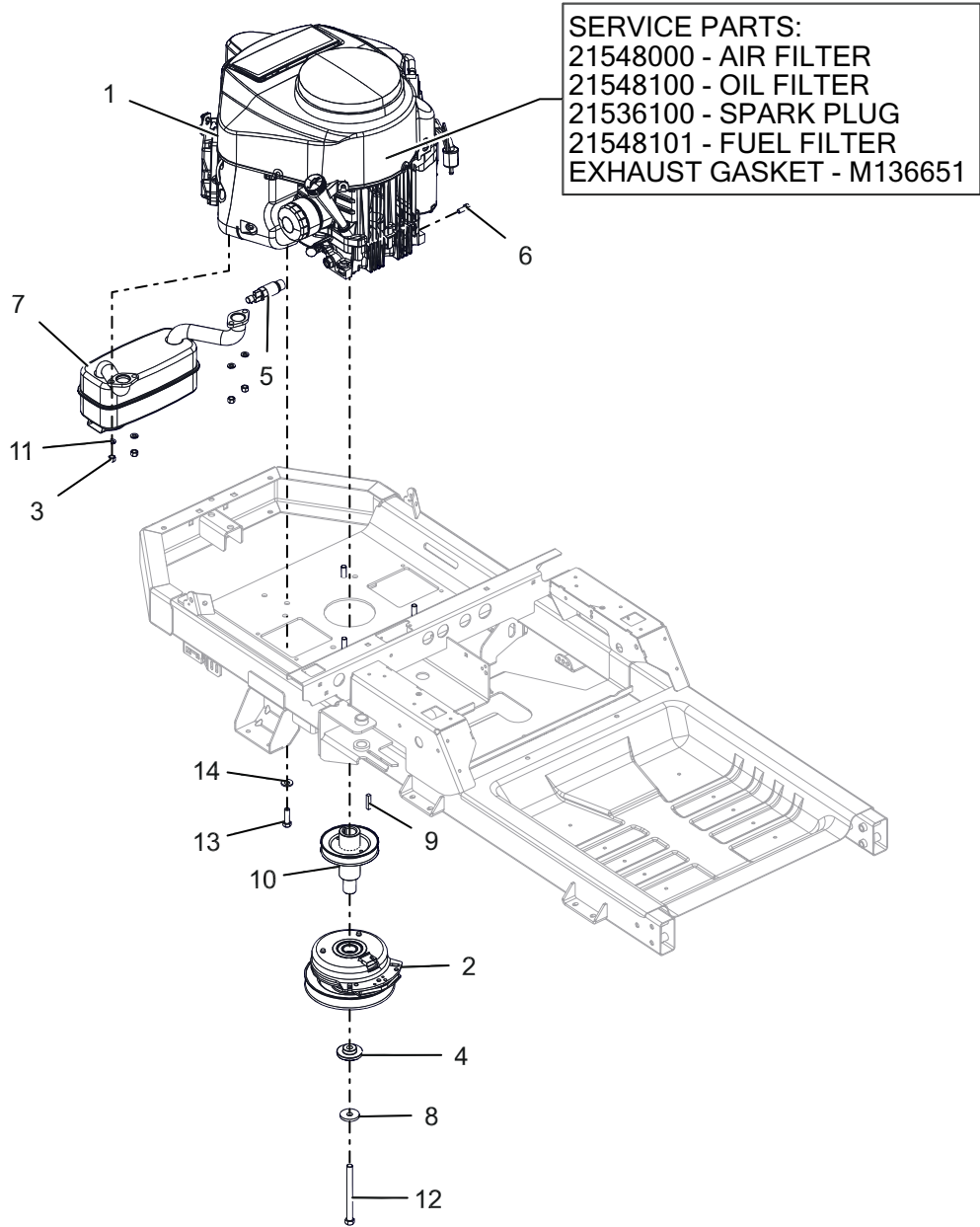
Model 915256



| BOM ID | Number | Qty | Description |
|--------|----------|-----|---------------------------------------|
| 1 | 08201201 | 1 | ENGINE, KOHLER 24HP TWIN |
| 2 | 04678300 | 1 | CLUTCH, ELEC 105 FT LB MONOPOLE 6.83" |
| 3 | 05113700 | 1 | MUFFLER, KOHLER |
| 4 | 05501206 | 1 | BSHG, -FLG .469 x 1.06 x .574 x 2.0 |
| 5 | 03943600 | 1 | DRAIN, OIL |
| 6 | 06500904 | 4 | NUT, FLG-TOP LK .312-18 GR5 ZCC |
| 7 | 07400128 | 4 | SCR-TAP .38-16X1.25 HWH ZCC |
| 8 | 06400936 | 1 | WSHR, 7/16" SPRING DISC |
| 9 | 06603400 | 1 | KEY-SQ .250X.250X1.250 |
| 10 | 07350400 | 1 | WLDMT, DRIVE SHEAVE (LONG) |
| 11 | 06300119 | 4 | WSHR,LK-REG 0.314 X 0.078 ZCC |
| 12 | 05901823 | 1 | BLT, HEX 0.4375-20X5 G8 ZCC NT |

ENGINE – KAWASAKI FR691

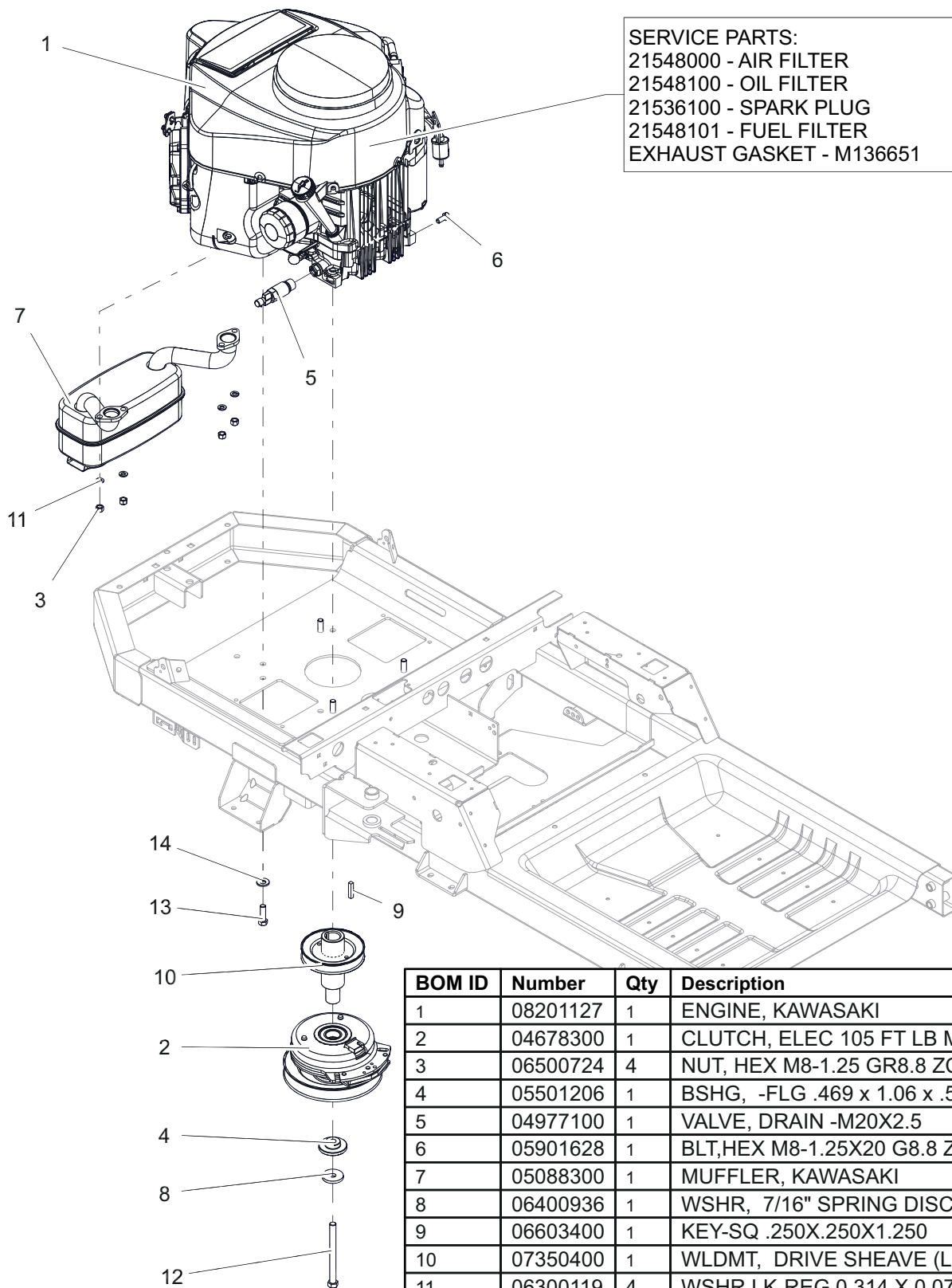
Models 915257



| BOM ID | Number | Qty | Description |
|--------|----------|-----|---------------------------------------|
| 1 | 08201128 | 1 | ENGINE, KAWASAKI |
| 2 | 04678300 | 1 | CLUTCH, ELEC 105 FT LB MONOPOLE 6.83" |
| 3 | 06500724 | 4 | NUT, HEX M8-1.25 GR8.8 ZC120 |
| 4 | 05501206 | 1 | BSHG, -FLG .469 x 1.06 x .574 x 2.0 |
| 5 | 04977100 | 1 | VALVE, DRAIN -M20X2.5 |
| 6 | 05901628 | 1 | BLT,HEX M8-1.25X20 G8.8 ZC120 |
| 7 | 05088300 | 1 | MUFFLER, KAWASAKI |
| 8 | 06400936 | 1 | WSHR, 7/16" SPRING DISC |
| 9 | 06603400 | 1 | KEY-SQ .250X.250X1.250 |
| 10 | 07350400 | 1 | WLDMT, DRIVE SHEAVE (LONG) |
| 11 | 06300119 | 4 | WSHR,LK-REG 0.314 X 0.078 ZCC |
| 12 | 05901823 | 1 | BLT, HEX 0.4375-20X5 G8 ZCC NT |
| 13 | 05901808 | 4 | BLT, HEX 0.375-16X1.25 GR5 ZCC NT |
| 14 | 06400927 | 4 | WSHR, 3/8" SPRING DISC |

ENGINE – KAWASAKI FR651

Models 915276



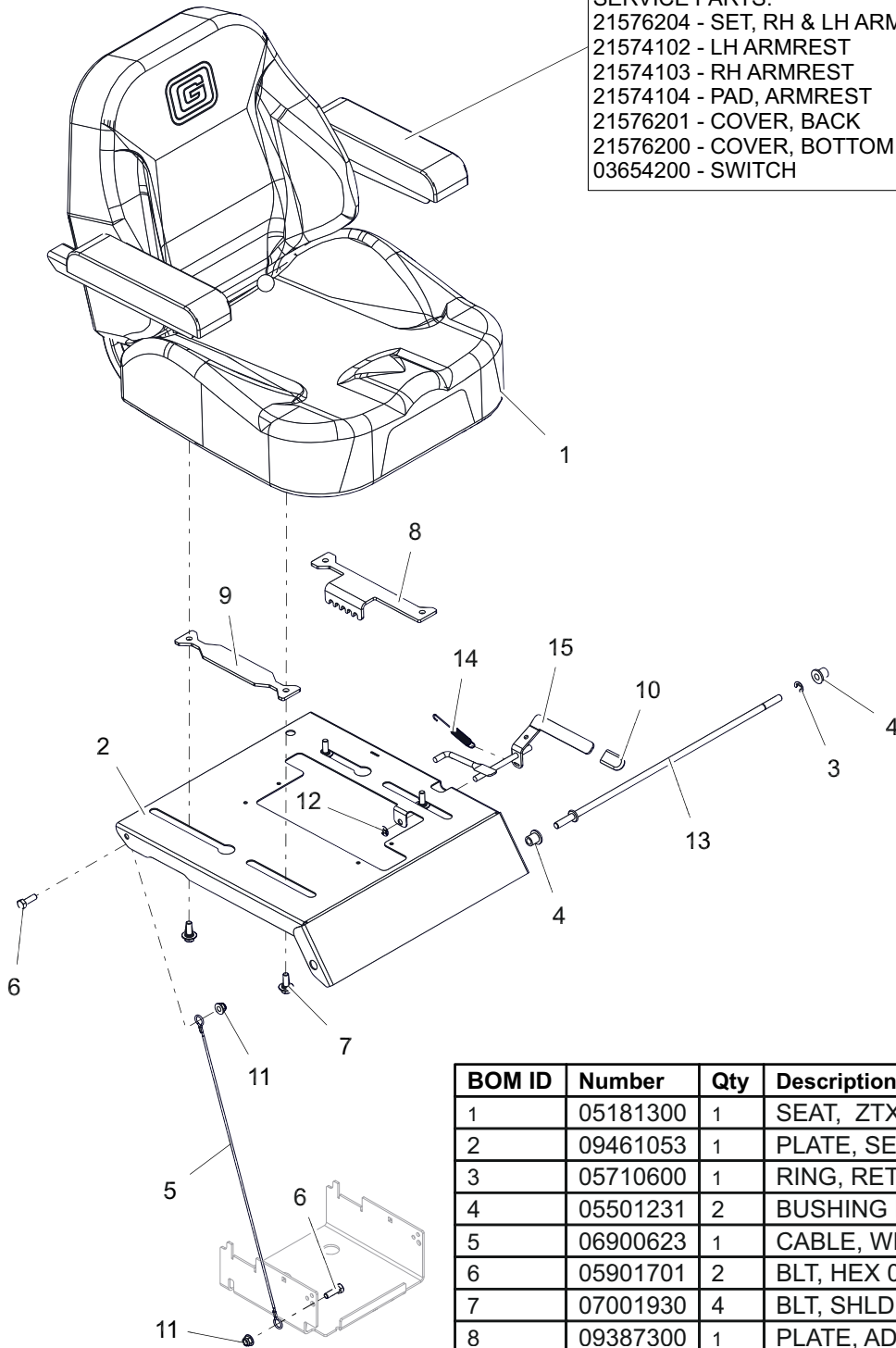
SERVICE PARTS:
 21548000 - AIR FILTER
 21548100 - OIL FILTER
 21536100 - SPARK PLUG
 21548101 - FUEL FILTER
 EXHAUST GASKET - M136651

| BOM ID | Number | Qty | Description |
|--------|----------|-----|---------------------------------------|
| 1 | 08201127 | 1 | ENGINE, KAWASAKI |
| 2 | 04678300 | 1 | CLUTCH, ELEC 105 FT LB MONOPOLE 6.83" |
| 3 | 06500724 | 4 | NUT, HEX M8-1.25 GR8.8 ZC120 |
| 4 | 05501206 | 1 | BSHG, -FLG .469 x 1.06 x .574 x 2.0 |
| 5 | 04977100 | 1 | VALVE, DRAIN -M20X2.5 |
| 6 | 05901628 | 1 | BLT,HEX M8-1.25X20 G8.8 ZC120 |
| 7 | 05088300 | 1 | MUFFLER, KAWASAKI |
| 8 | 06400936 | 1 | WSHR, 7/16" SPRING DISC |
| 9 | 06603400 | 1 | KEY-SQ .250X.250X1.250 |
| 10 | 07350400 | 1 | WLDMT, DRIVE SHEAVE (LONG) |
| 11 | 06300119 | 4 | WSHR,LK-REG 0.314 X 0.078 ZCC |
| 12 | 05901823 | 1 | BLT, HEX 0.4375-20X5 G8 ZCC NT |
| 13 | 05901808 | 4 | BLT, HEX 0.375-16X1.25 GR5 ZCC NT |
| 14 | 06400927 | 4 | WSHR, 3/8" SPRING DISC |

SEAT

Models All

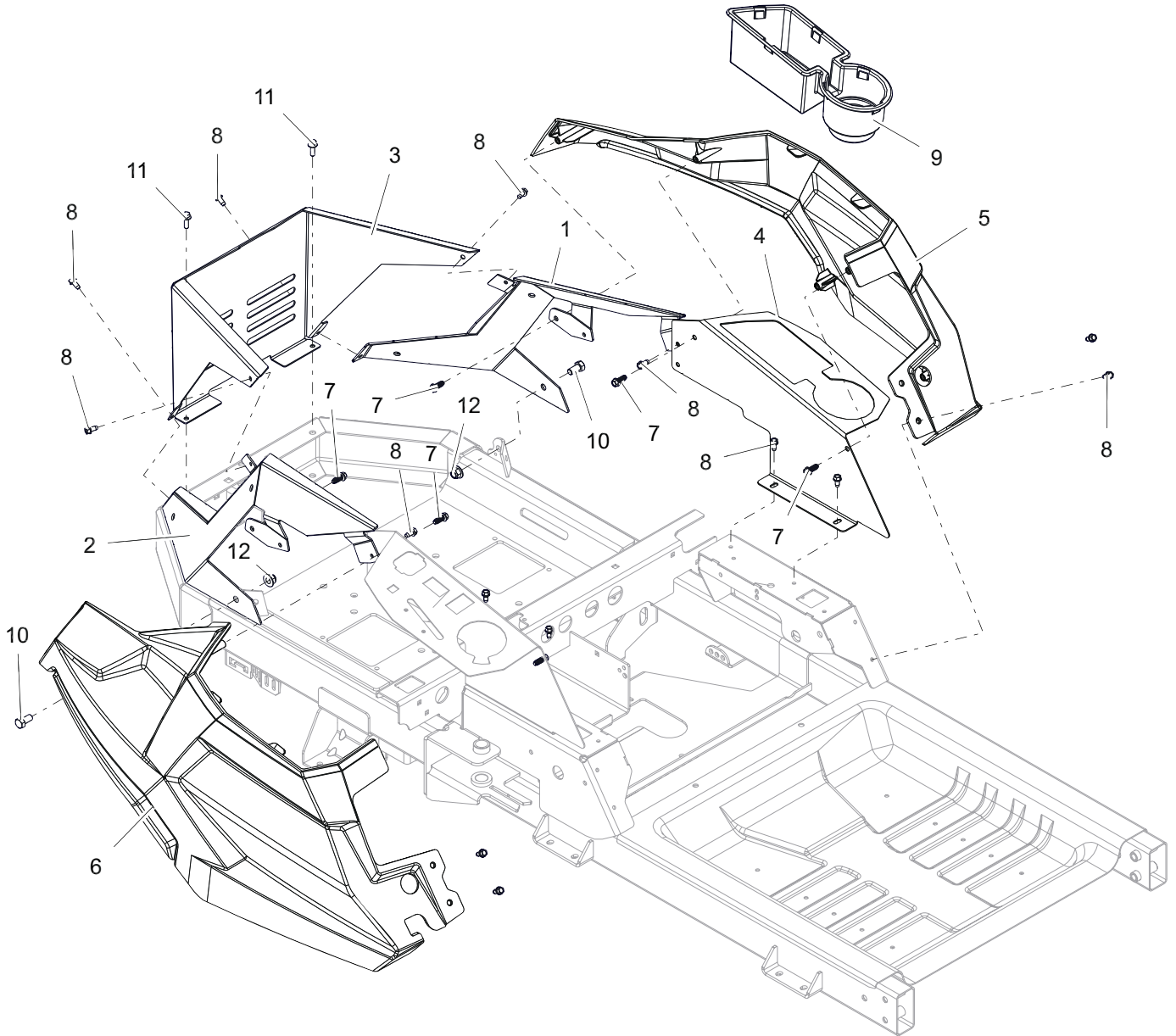
SERVICE PARTS:
 21576204 - SET, RH & LH ARMREST
 21574102 - LH ARMREST
 21574103 - RH ARMREST
 21574104 - PAD, ARMREST
 21576201 - COVER, BACK
 21576200 - COVER, BOTTOM
 03654200 - SWITCH



| BOM ID | Number | Qty | Description |
|--------|----------|-----|---|
| 1 | 05181300 | 1 | SEAT, ZTX |
| 2 | 09461053 | 1 | PLATE, SEAT (RED) |
| 3 | 05710600 | 1 | RING, RETAINING-E .375X.035 |
| 4 | 05501231 | 2 | BUSHING FLANGED .380 X .580 X .667 X .875 |
| 5 | 06900623 | 1 | CABLE, WIRE (LANYARD)-.093X19.5 |
| 6 | 05901701 | 2 | BLT, HEX 0.3125-18X1 GR5 ZC120 |
| 7 | 07001930 | 4 | BLT, SHLDR .31-18 X .100 |
| 8 | 09387300 | 1 | PLATE, ADJUSTABLE SEAT TRACK (BLACK) |
| 9 | 09484351 | 1 | PLATE, ADJUSTABLE SEAT TRACK (BLACK) |
| 10 | 04396600 | 1 | GRIP, SEAT LEVER |
| 11 | 06500809 | 2 | NUT, LK-NYL-FLG .31-18 GR5 ZC120 |
| 12 | 06514900 | 1 | NUT, PUSH .312 |
| 13 | 09448000 | 1 | ROD, SEAT PIVOT |
| 14 | 08321100 | 1 | SPRG, EXTENSION - .043 X .440 X 3.310 |
| 15 | 04756451 | 1 | WLDMT, ADJUSTABLE SEAT LATCH |

FENDERS

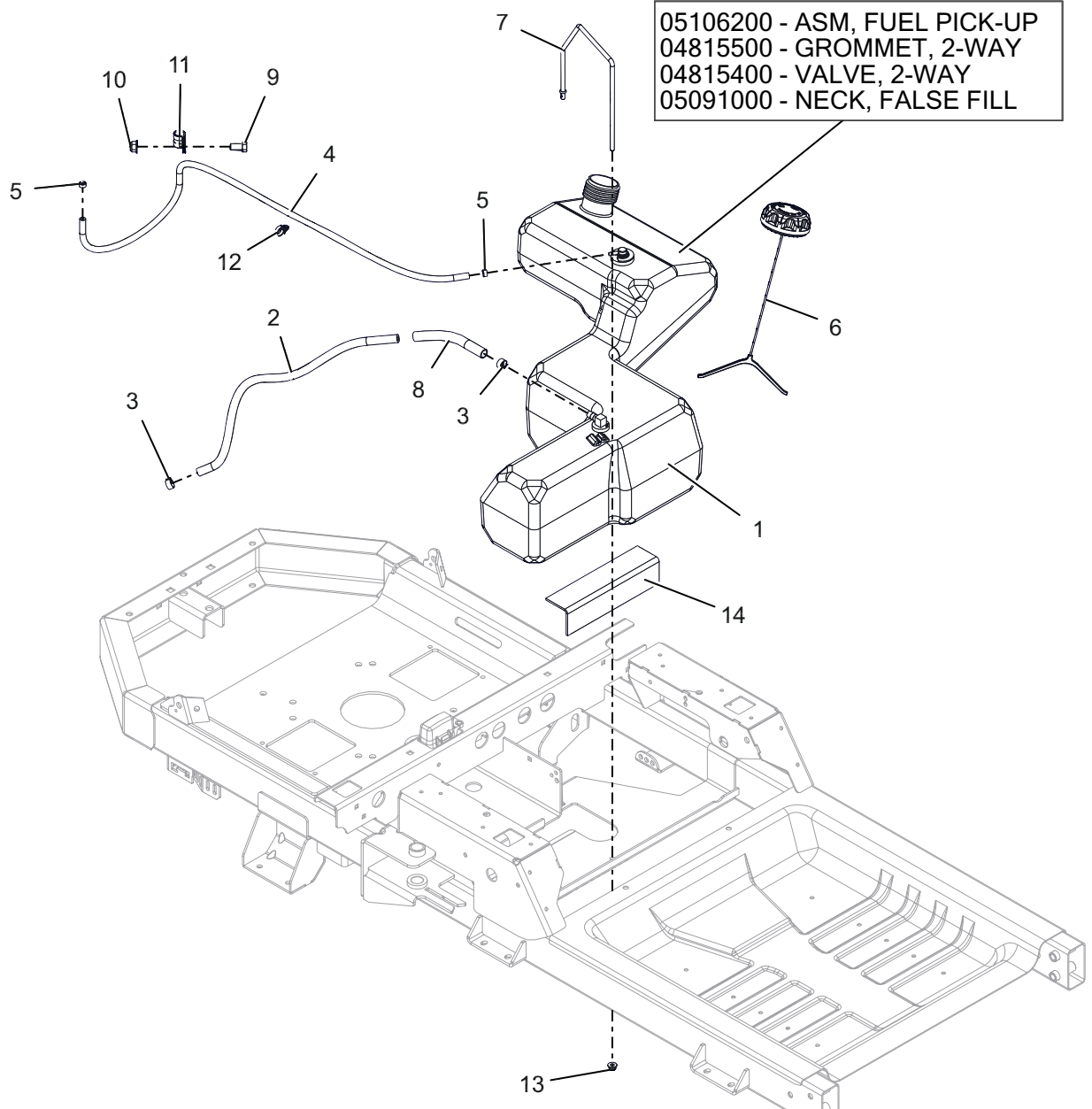
Models All



| BOM ID | Number | Qty | Description |
|--------|----------|-----|-------------------------------------|
| 1 | 05299153 | 1 | WRAP, REAR - LH (RED) |
| 2 | 05299553 | 1 | WRAP, REAR - RH (RED) |
| 3 | 05299251 | 1 | WRAP, REAR (BLACK) |
| 4 | 05299353 | 1 | PANEL, CUP HOLDER (RED) |
| 5 | 05292400 | 1 | FENDER, LH |
| 6 | 05292500 | 1 | FENDER, RH |
| 7 | 07400119 | 6 | SCR-HEX .312-14X.75 H/L |
| 8 | 07400122 | 14 | SCR-TAP .25-20X.50 HWH ZCC |
| 9 | 05091800 | 1 | INSERT, CUP/STORAGE HOLDER |
| 10 | 05901702 | 2 | BLT, HEX 0.375-16X0.75 GR5 ZC120 |
| 11 | 05901731 | 2 | BLT, HEX-FLG 0.25-20X0.75 GR5 ZB500 |
| 12 | 06500726 | 2 | NUT, LK-NYL-FLG .38-16 GR5 ZC120 |

FUEL SYSTEM – KOHLER

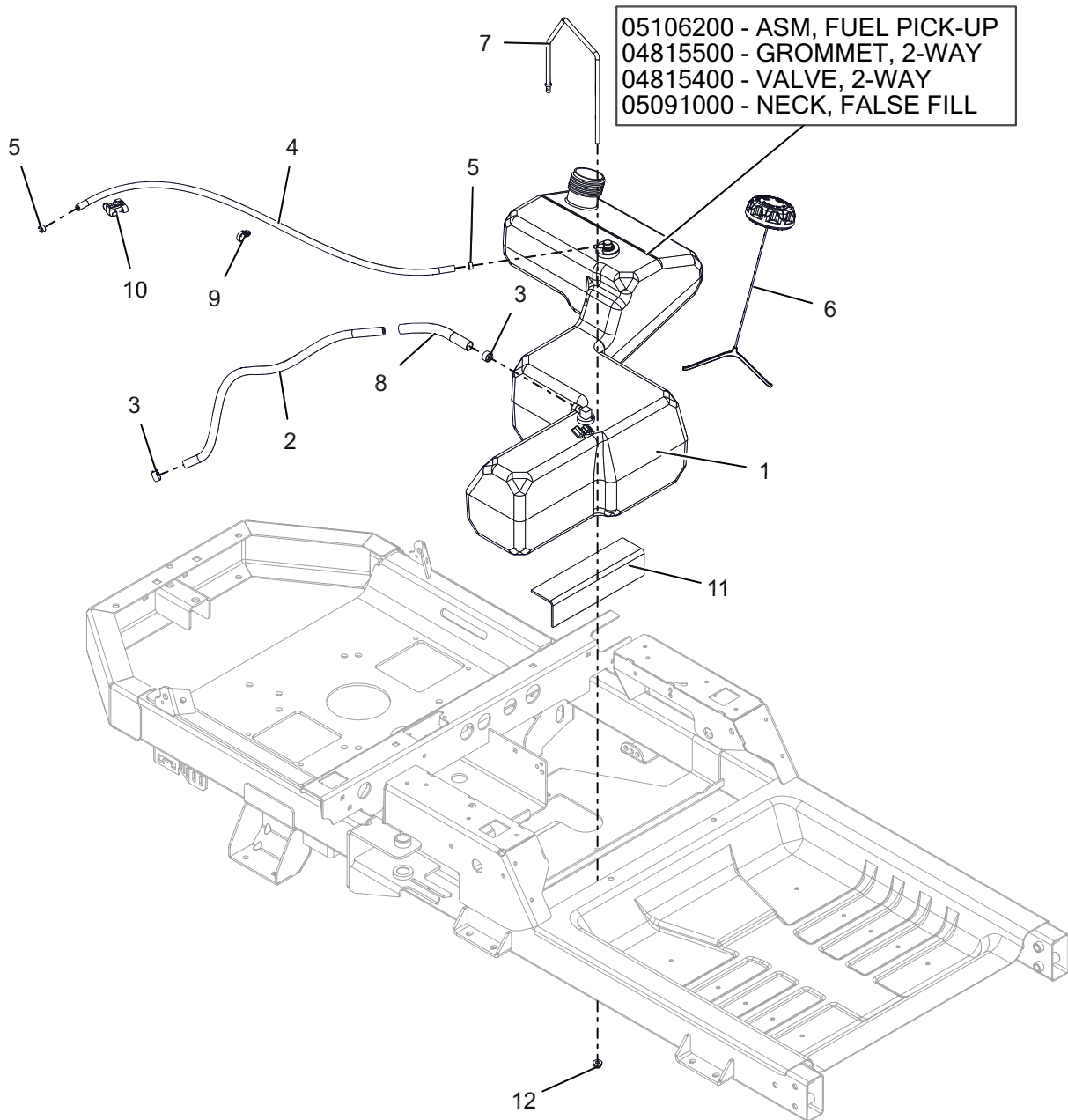
Models 915255, 256



| BOM ID | Number | Qty | Description |
|--------|----------|-----|--|
| 1 | 05264800 | 1 | ASM, FUEL TANK-IKON |
| 2 | 03278100 | 1 | .25 LOW PERM FUEL X 18.0 LG - FUEL PICK-UP TO ENGINE |
| 3 | 03278800 | 2 | CLAMP, FUEL LINE |
| 4 | 03375900 | 1 | HOSE, .188 LOW-PERM GAS-36"LG |
| 5 | 04097700 | 2 | CLAMP - HOSE, SPRING .188 |
| 6 | 04589200 | 1 | CAP, FUEL VENT-IN 2.25" RATCHET |
| 7 | 05099867 | 1 | BRKT, FUEL |
| 8 | 05118500 | 1 | SLEEVE, ANTI ABRASION .5" X .064" WALL |
| 9 | 05901702 | 1 | BLT, HEX 0.375-16X0.75 GR5 ZC120 |
| 10 | 06500726 | 1 | NUT, LK-NYL-FLG .38-16 GR5 ZC120 |
| 11 | 06908200 | 1 | CLAMP, CUSHIONED STEEL |
| 12 | 00367900 | 1 | CLIP, ROUTING (.50 ID) |
| 13 | 06500813 | 1 | NUT, LK-NYL-FLG .25-20 GR5 ZC120 |
| 14 | 04864600 | 1 | PAD, RBR -TANK |

FUEL SYSTEM – KAWASAKI

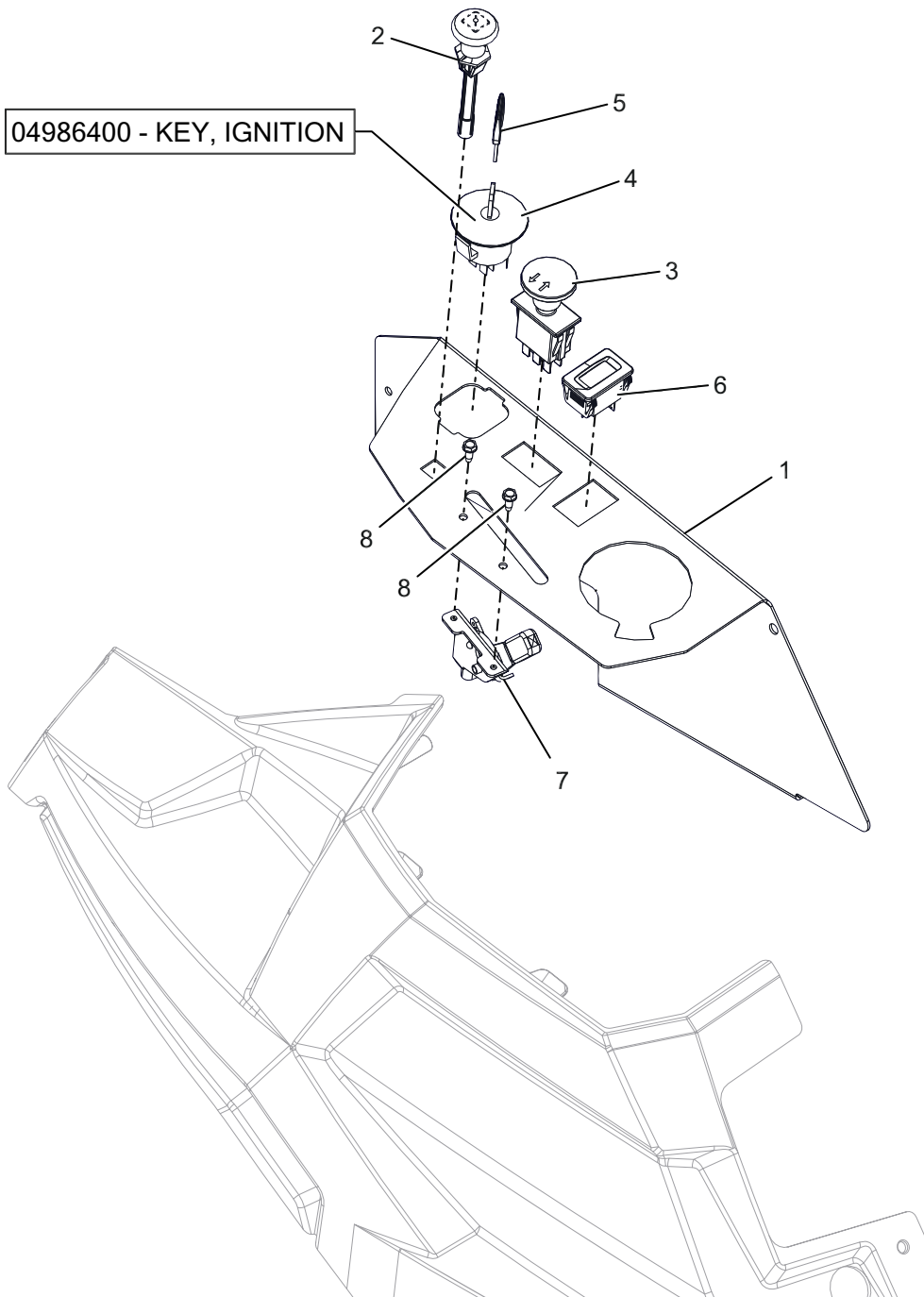
Models 915257, 276



| BOM ID | Number | Qty | Description |
|--------|----------|-----|--|
| 1 | 05264800 | 1 | ASM, FUEL TANK-IKON |
| 2 | 03278100 | 1 | .25 LOW PERM FUEL X 18.0 LG - FUEL PICK-UP TO ENGINE |
| 3 | 03278800 | 2 | CLAMP, FUEL LINE |
| 4 | 03375900 | 1 | HOSE, .188 LOW-PERM GAS -28"LG |
| 5 | 04097700 | 2 | CLAMP - HOSE, SPRING .188 |
| 6 | 04589200 | 1 | CAP, FUEL VENT-IN 2.25" RATCHET |
| 7 | 05099867 | 1 | BRKT, FUEL |
| 8 | 05118500 | 1 | SLEEVE, ANTI ABRASION .5" X .064" WALL |
| 9 | 00367900 | 1 | CLIP, ROUTING (.50 ID) |
| 10 | 07001712 | 1 | CLIP, T, .38-.50 |
| 11 | 04864600 | 1 | PAD, RBR -TANK |
| 12 | 06500813 | 1 | NUT, LK-NYL-FLG .25-20 GR5 ZC120 |

CONTROL PANEL

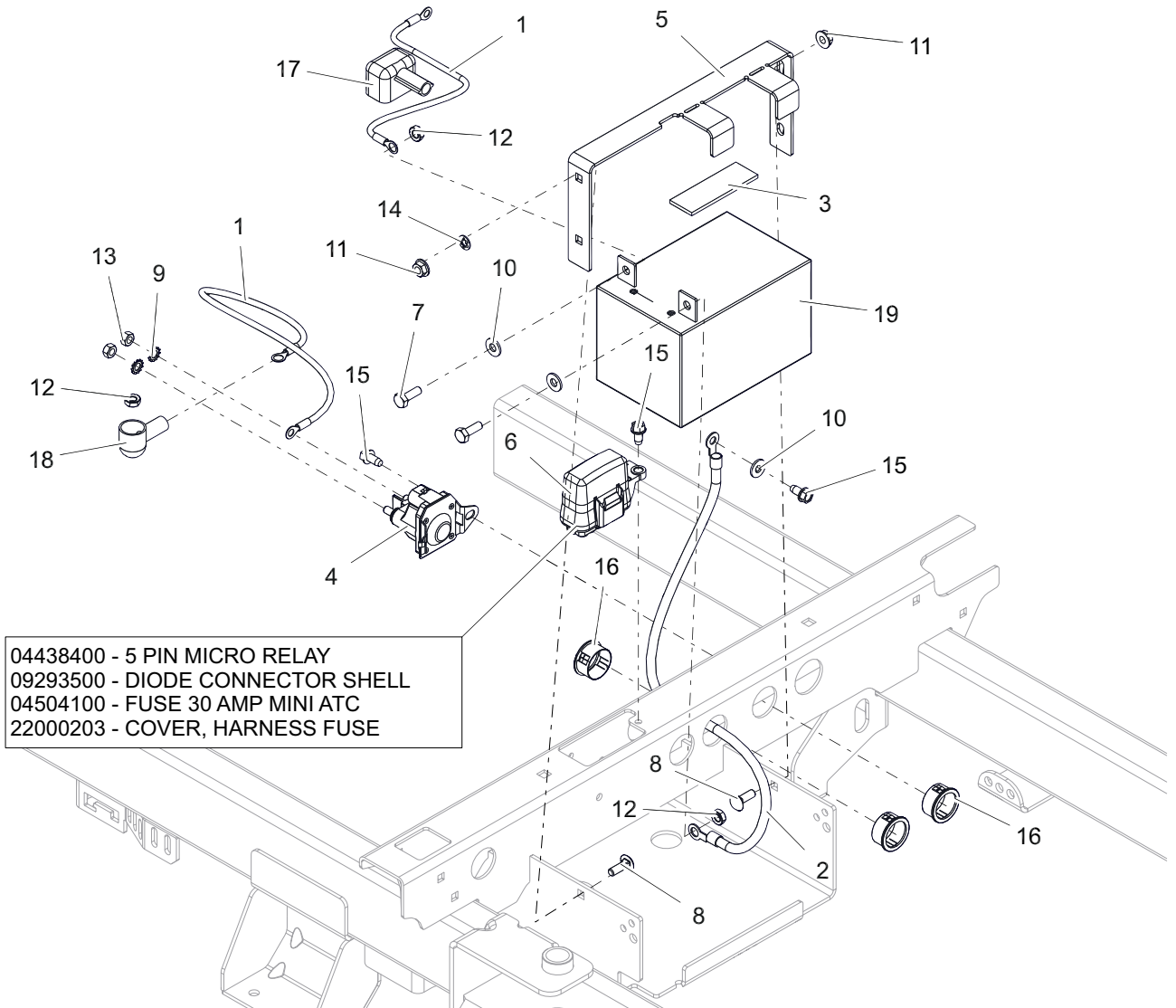
Models All



| BOM ID | Number | Qty | Description |
|--------|----------|-----|----------------------------------|
| 1 | 05299453 | 1 | PANEL, CONTROL (RED) |
| 2 | 06900621 | 1 | CABLE, CHOKE |
| 3 | 04399600 | 1 | SWITCH, CLUTCH YELLOW(W/GRAPHIC) |
| 4 | 04974300 | 1 | SWITCH, IGNITION |
| 5 | 04986400 | 1 | KEY, IGNITION |
| 6 | 05254800 | 1 | HOUR METER |
| 7 | 06900620 | 1 | CABLE, THROTTLE 90DEG 33" |
| 8 | 07400130 | 2 | SCR-TAP #10-24X.50 HWH ZCC |

ELECTRICAL

Models All

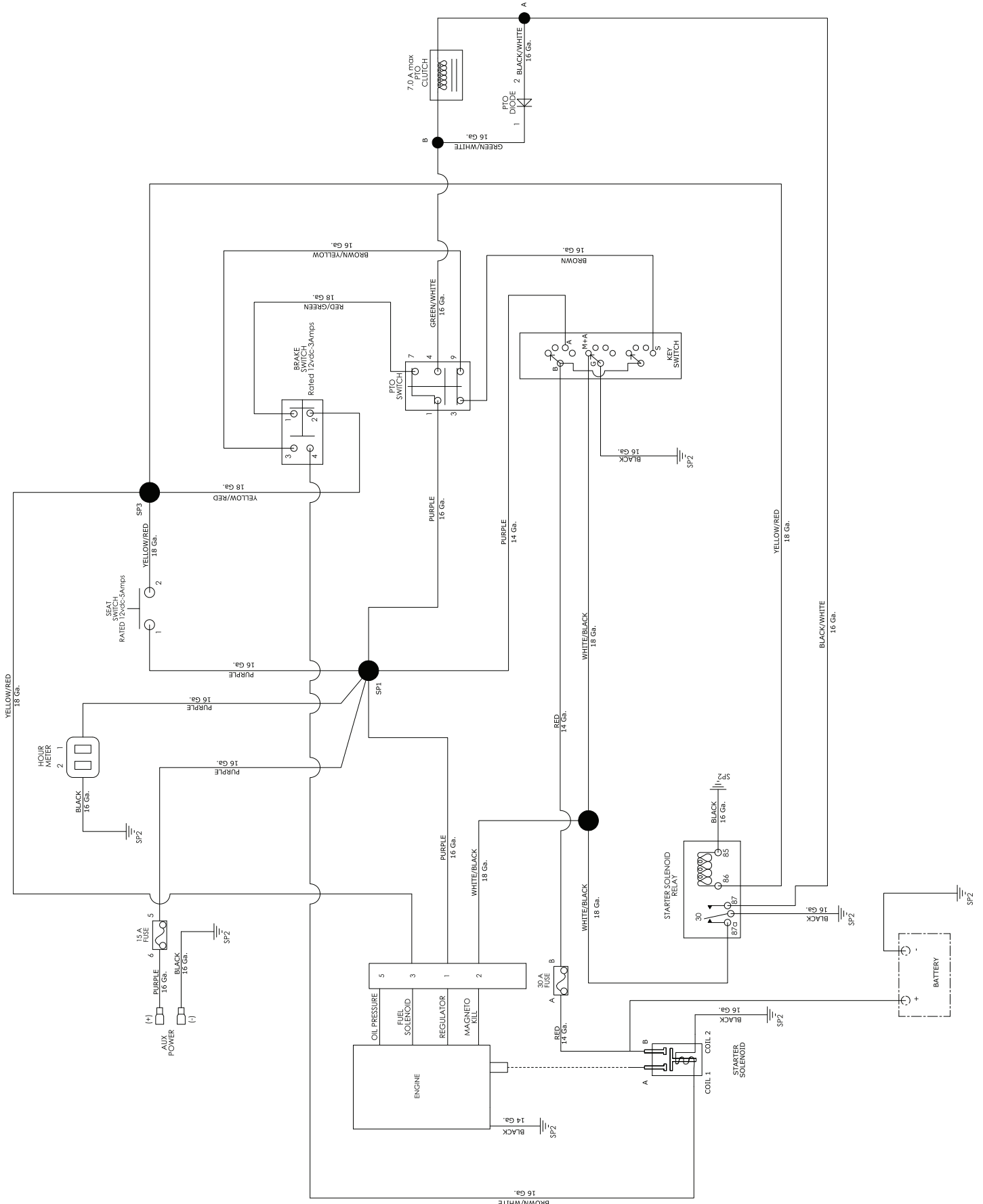


04438400 - 5 PIN MICRO RELAY
 09293500 - DIODE CONNECTOR SHELL
 04504100 - FUSE 30 AMP MINI ATC
 22000203 - COVER, HARNESS FUSE

| BOM ID | Number | Qty | Description |
|--------|----------|-----|-------------------------------------|
| 1 | 04787400 | 2 | CABLE, POS BAT 15.00" |
| 2 | 03288100 | 1 | CABLE, NEGATIVE BATTERY 24" |
| 3 | 04850000 | 1 | PAD, RBR 1.0"X3.0" W/ADHESIVE |
| 4 | 05167200 | 1 | SOLENOID, STARTER (SEALED) |
| 5 | 05266251 | 1 | BRKT, BATTERY HOLD-DOWN (BLACK) |
| 6 | 05295600 | 1 | HARNESS, WIRE |
| 7 | 05901716 | 2 | BLT, HEX 0.25-20X0.75 GR5 ZC120 |
| 8 | 06200307 | 2 | BTL,RHSN .250-20 X 0.75 G5 ZCC |
| 9 | 06300118 | 2 | WSHR-LK-EXT 0.262X0.502X0.026 ZC120 |
| 10 | 06401001 | 3 | WSHR-FL-STL 0.281X0.625X0.065 ZC120 |
| 11 | 06500903 | 2 | NUT, FLG-TOP LK .250-20 GR5 ZC120 |
| 12 | 06500921 | 3 | NUT-KEPS .250-20 |
| 13 | 06500925 | 2 | NUT, HEX M6-1.0 GR8.8 ZC120 |
| 14 | 07027600 | 1 | NUT, PUSH .25X.50 O.D. |
| 15 | 07400122 | 3 | SCR-TAP .25-20X.50 HWH ZCC |
| 16 | 07500308 | 3 | BSHG, PANEL SNAP .937X1.109X.56 |
| 17 | 07505700 | 1 | INSULATOR |
| 18 | 07533200 | 1 | BOOT, EYELET TERMINAL |
| 19 | 09425500 | 1 | BATTERY, 12V 12A -190CCA |

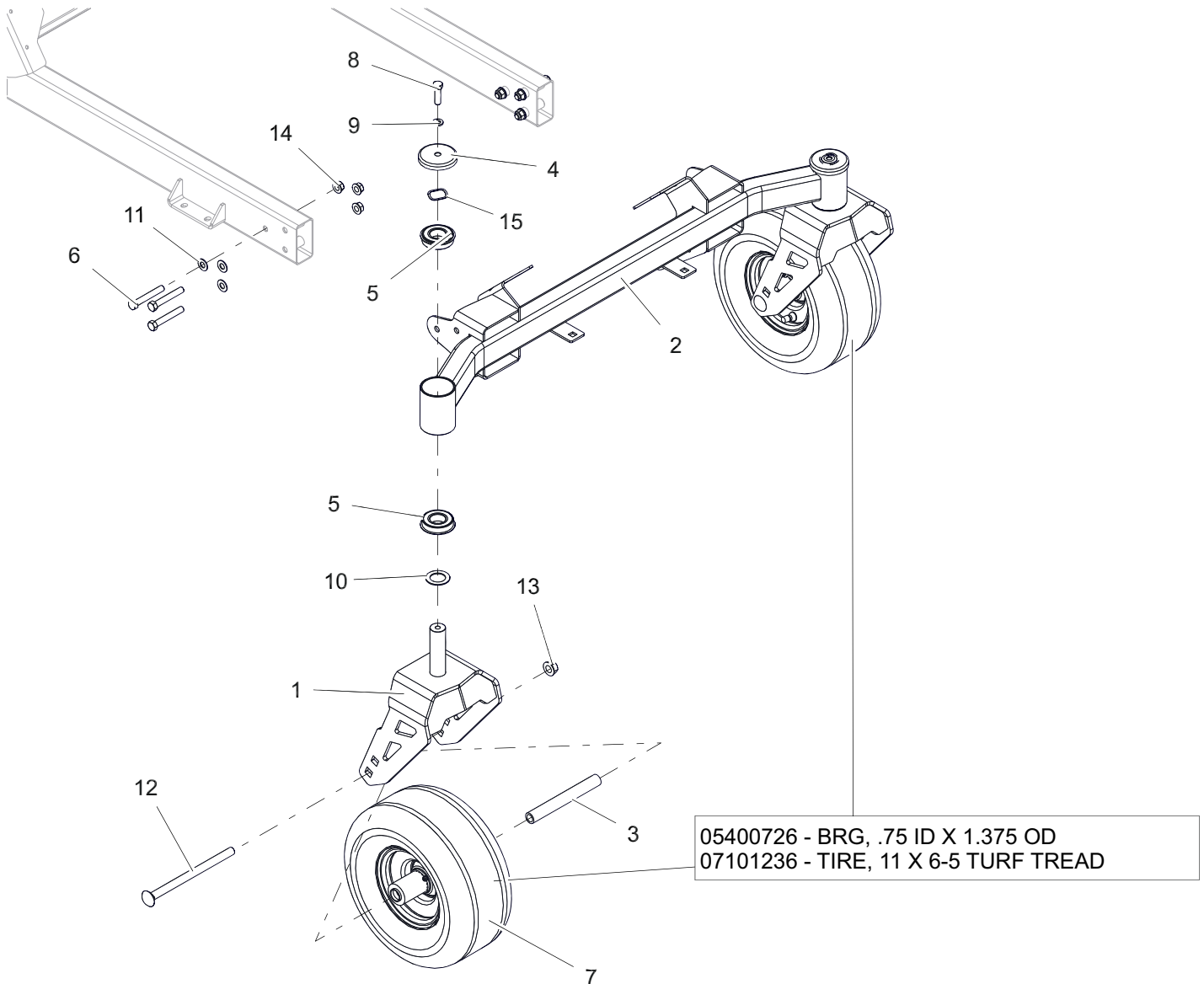
WIRING DIAGRAM

Models All



FRONT CASTER WHEELS

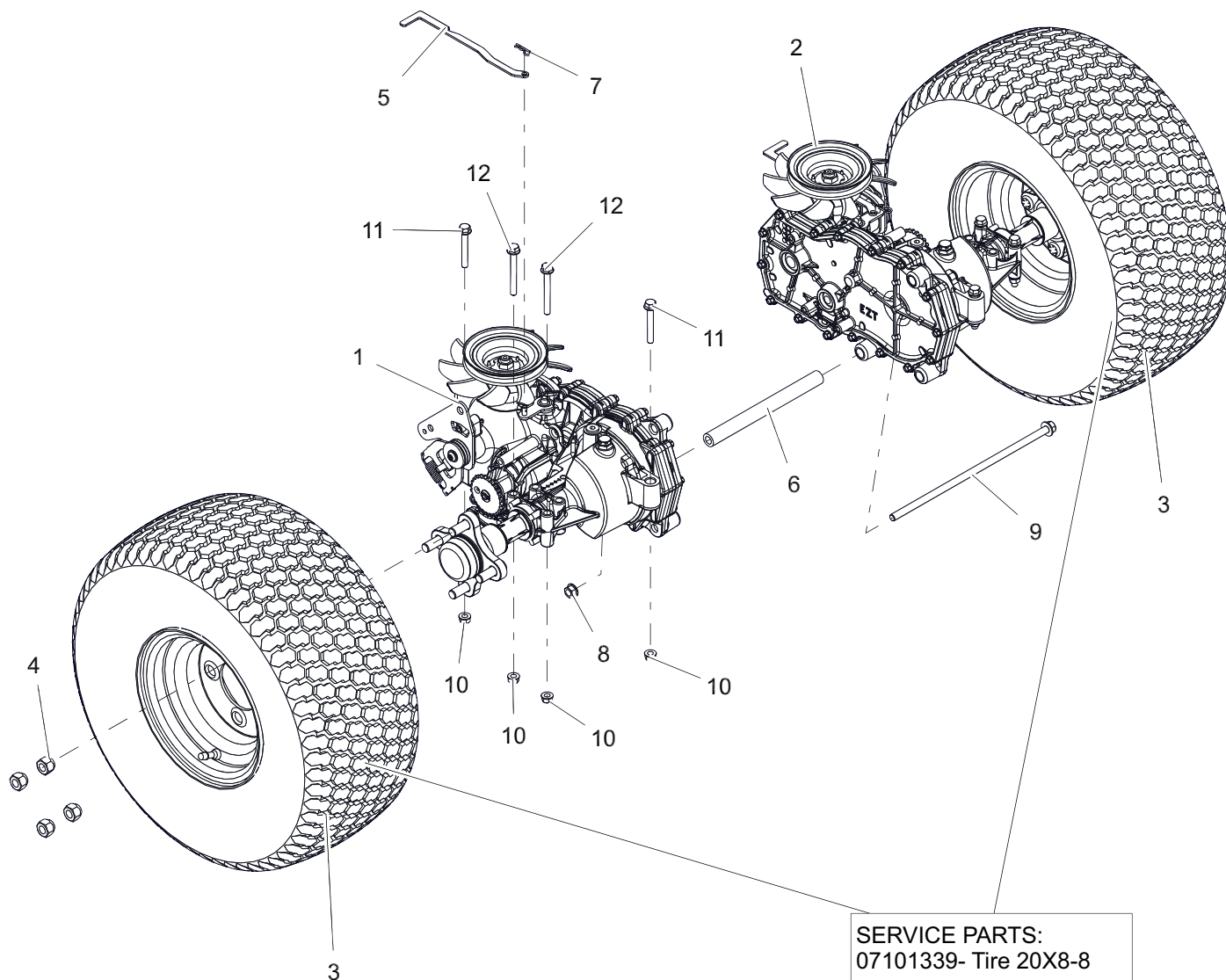
Models All



| BOM ID | Number | Qty | Description |
|--------|----------|-----|---|
| 1 | 05186553 | 2 | WLDMT, CASTER FORK-XL (RED) |
| 2 | 05198153 | 1 | WLDMT, FRONT AXLE-X/XL (RED) |
| 3 | 00853400 | 2 | SPCR, FRONT WHEEL (WIDE) |
| 4 | 05198400 | 2 | SHIELD, AXLE BEARING |
| 5 | 05400728 | 4 | BEARING, BALL -2.000 OD X 1.000 ID X .5625 W/RING |
| 6 | 05901811 | 6 | BLT, HEX 0.375-16X2.5 GR8 ZCC |
| 7 | 07101423 | 2 | TIRE/WHEEL, 11 X 6-5 |
| 8 | 05901724 | 1 | BLT, HEX 0.375-16X1.25 GR5 ZC120 |
| 9 | 06300116 | 2 | WSHR,LK-REG 0.377 X 0.094 ZCC |
| 10 | 06416600 | 2 | WSHR, HRD THRS 1.007X1.542X.062 |
| 11 | 06401129 | 6 | WSHR-FL-STL 0.406X0.812X0.055 HRD |
| 12 | 06200320 | 2 | BTL,RHSN .500-13 X 7.5 G5 ZCC |
| 13 | 06500907 | 2 | NUT, FLG-TOP LK .500-13 GF ZCC |
| 14 | 06500905 | 6 | NUT, FLG-TOP LK .375-16 GRG ZC120 |
| 15 | 06401030 | 2 | WASHER, WAVE |

REAR TIRES AND TRANSAXLES – 42"

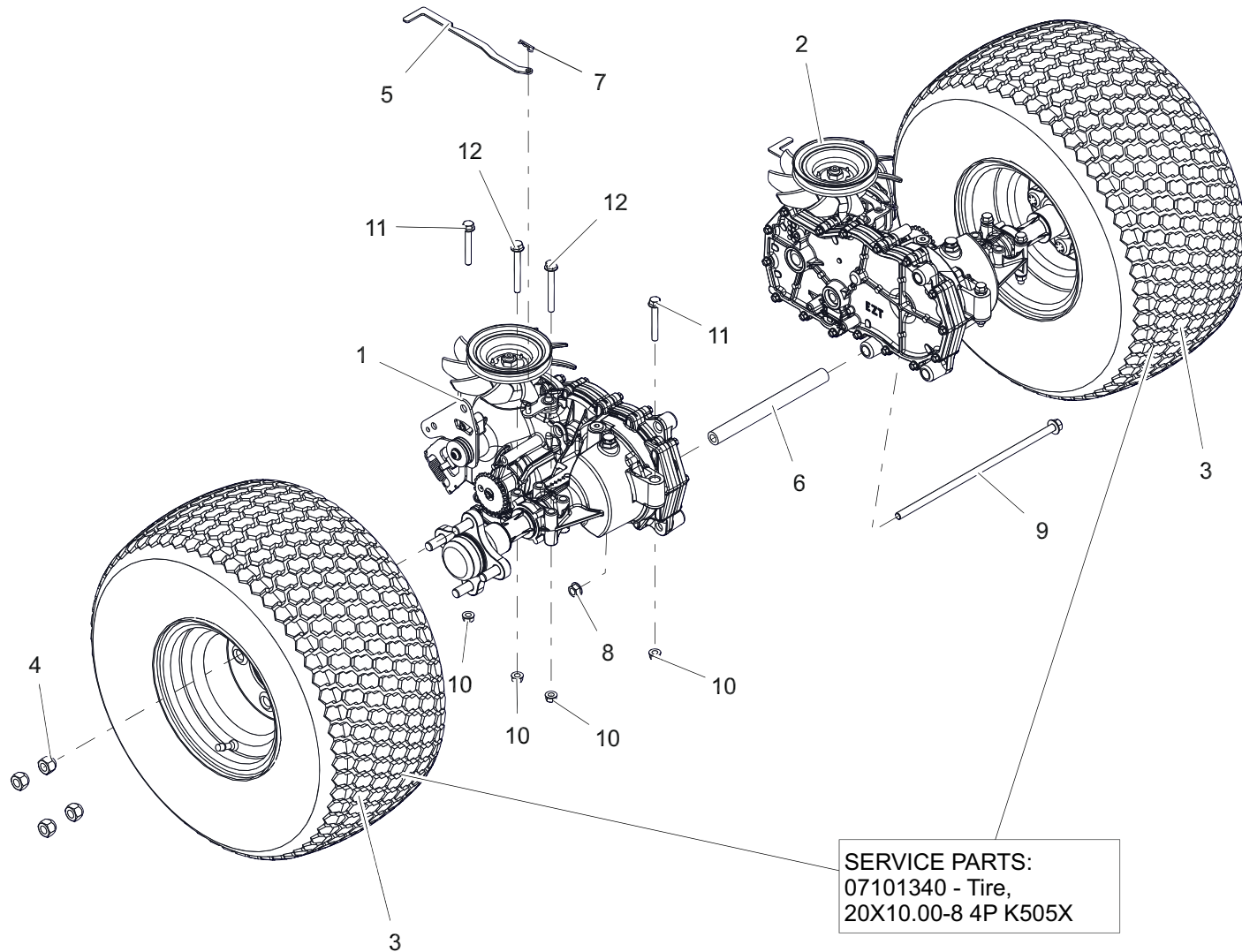
Models 915255



| BOM ID | Number | Qty | Description |
|--------|----------|-----|--|
| 1 | 05291900 | 1 | TRANSAXLE, RH |
| 2 | 05291800 | 1 | TRANSAXLE, LH |
| 3 | 07101418 | 2 | ASSM TIRE\WHEEL, 20 X 8 -8 |
| 4 | 06500926 | 8 | NUT, WHEEL .500-20 ZCC |
| 5 | 04884151 | 2 | BRKT, VALVE DUMP |
| 6 | 05162451 | 1 | SPCR, TRANSAXLE .438 ID X .750 OD X 8.18 (BLACK) |
| 7 | 06700222 | 2 | PIN, HAIR #213 .08X1.19 ZCC |
| 8 | 06500901 | 1 | NUT, FLG-CTR LK .375-16 GR5 ZC120 |
| 9 | 05901902 | 1 | BLT, HEX-FLG 0.375-16X11.5 GR5 ZC120 |
| 10 | 06500840 | 8 | NUT, FLG-CTR LK .312-18 GR5 ZCC |
| 11 | 05901910 | 4 | BLT, HEX-FLG 0.312-18X2.25 GR5 ZCC |
| 12 | 05901911 | 4 | BLT, HEX-FLG 0.312-18X2.75 GR5 ZCC |

REAR TIRES AND TRANSAXLES – 48" AND 52"

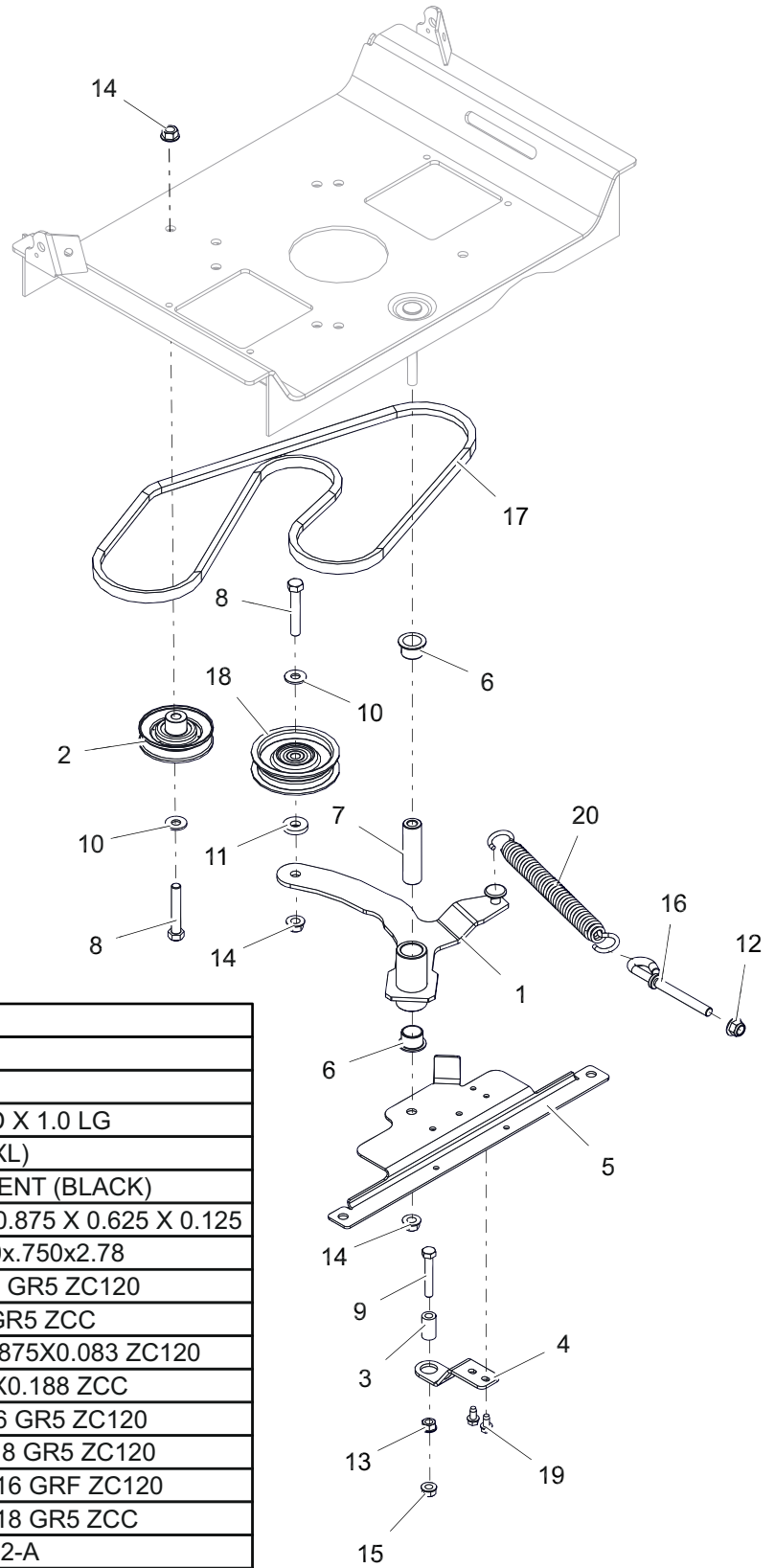
Model 915256, 257, 276



| BOM ID | Number | Qty | Description |
|--------|----------|-----|--|
| 1 | 05291900 | 1 | TRANSAXLE, RH |
| 2 | 05291800 | 1 | TRANSAXLE, LH |
| 3 | 07101419 | 2 | ASSM TIRE\WHEEL, 20 X 10 -8 |
| 4 | 06500926 | 8 | NUT, WHEEL .500-20 ZCC |
| 5 | 04884151 | 2 | BRKT, VALVE DUMP |
| 6 | 05162451 | 1 | SPCR, TRANSAXLE .438 ID X .750 OD X 8.18 (BLACK) |
| 7 | 06700222 | 2 | PIN, HAIR #213 .08X1.19 ZCC |
| 8 | 06500901 | 1 | NUT, FLG-CTR LK .375-16 GR5 ZC120 |
| 9 | 05901902 | 1 | BLT, HEX-FLG 0.375-16X11.5 GR5 ZC120 |
| 10 | 06500840 | 8 | NUT, FLG-CTR LK .312-18 GR5 ZCC |
| 11 | 05901910 | 4 | BLT, HEX-FLG 0.312-18X2.25 GR5 ZCC |
| 12 | 05901911 | 4 | BLT, HEX-FLG 0.312-18X2.75 GR5 ZCC |

TRANSAXLE DRIVE

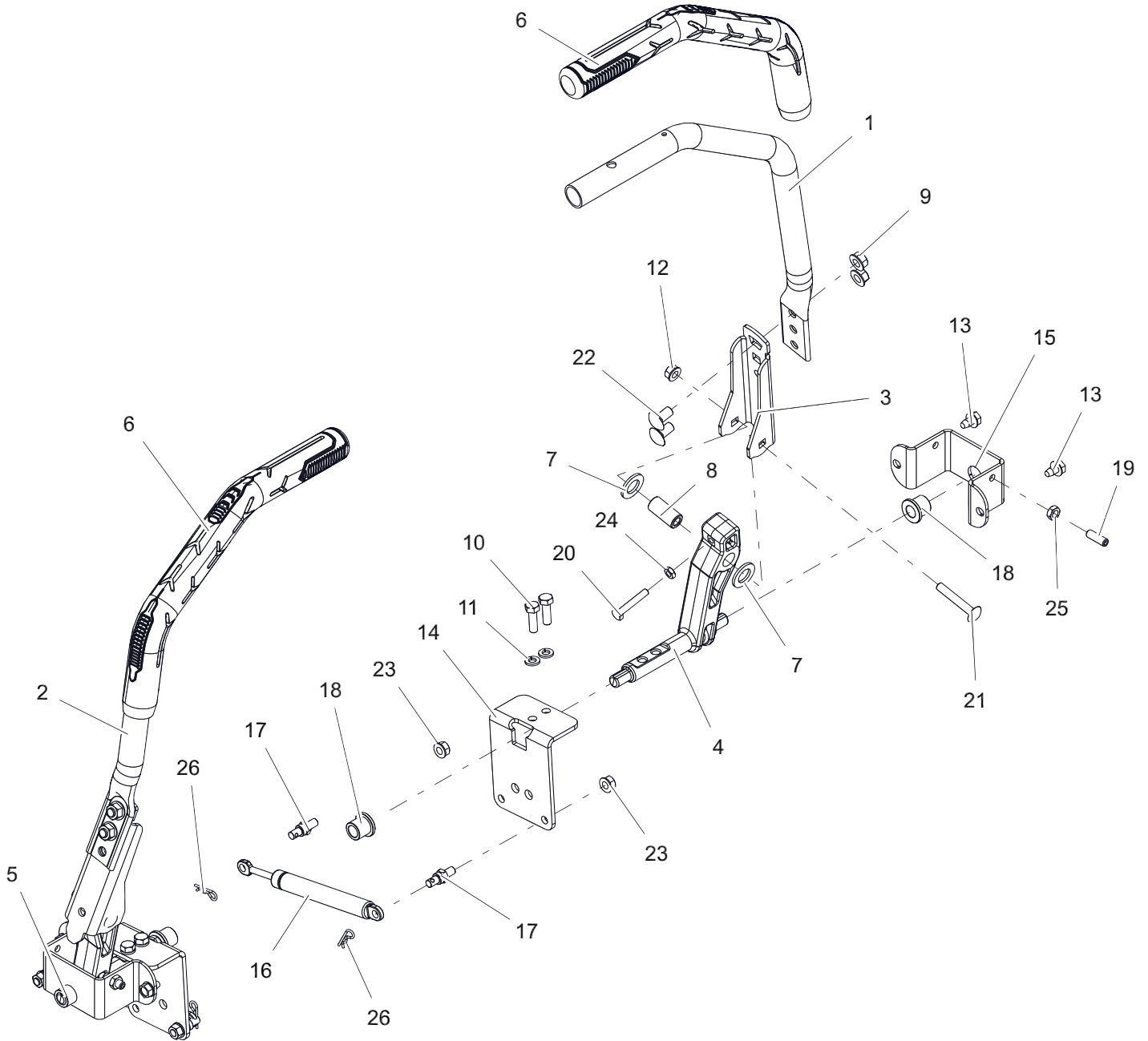
Models All



| BOM ID | Number | Qty | Description |
|--------|----------|-----|---|
| 1 | 04890451 | 1 | WLDMT, IDLER |
| 2 | 07347200 | 1 | ASM, 3.00" V IDLER |
| 3 | 03980200 | 1 | SPCR, RUBBER 5/16 ID X 1.0 LG |
| 4 | 04879351 | 1 | BRKT, CLUTCH STOP (XL) |
| 5 | 05240851 | 1 | BRKT, IDLER ATTACHMENT (BLACK) |
| 6 | 05500039 | 2 | BSHG, FLANGE 0.75 X 0.875 X 0.625 X 0.125 |
| 7 | 05501237 | 1 | SPACER SLEEVED .380x.750x2.78 |
| 8 | 05901640 | 2 | BLT, HEX 0.375-16X2.25 GR5 ZC120 |
| 9 | 05901805 | 1 | BLT, HEX 0.3125-18X2 GR5 ZCC |
| 10 | 06401023 | 2 | WSHR-FL-STL 0.375X0.875X0.083 ZC120 |
| 11 | 06401108 | 1 | WSHR-FL-STL 0.406X1X0.188 ZCC |
| 12 | 06500726 | 1 | NUT, LK-NYL-FLG .38-16 GR5 ZC120 |
| 13 | 06500815 | 1 | NUT, FLG-SPNLK .312-18 GR5 ZC120 |
| 14 | 06500822 | 3 | NUT, FLG-TOP LK .375-16 GRF ZC120 |
| 15 | 06500904 | 1 | NUT, FLG-TOP LK .312-18 GR5 ZCC |
| 16 | 07002023 | 1 | BOLT, EYE - 38-16 UNC 2-A |
| 17 | 07200718 | 1 | V-BELT, A SECTION RAW EDGE |
| 18 | 07349900 | 1 | SHEAVE, IDLER -V .38 x 4.00 |
| 19 | 07400122 | 2 | SCR-TAP .25-20X.50 HWH ZCC |
| 20 | 08300728 | 1 | SPRG, EXTENSION - SWIVEL |

CONTROLS

Models All

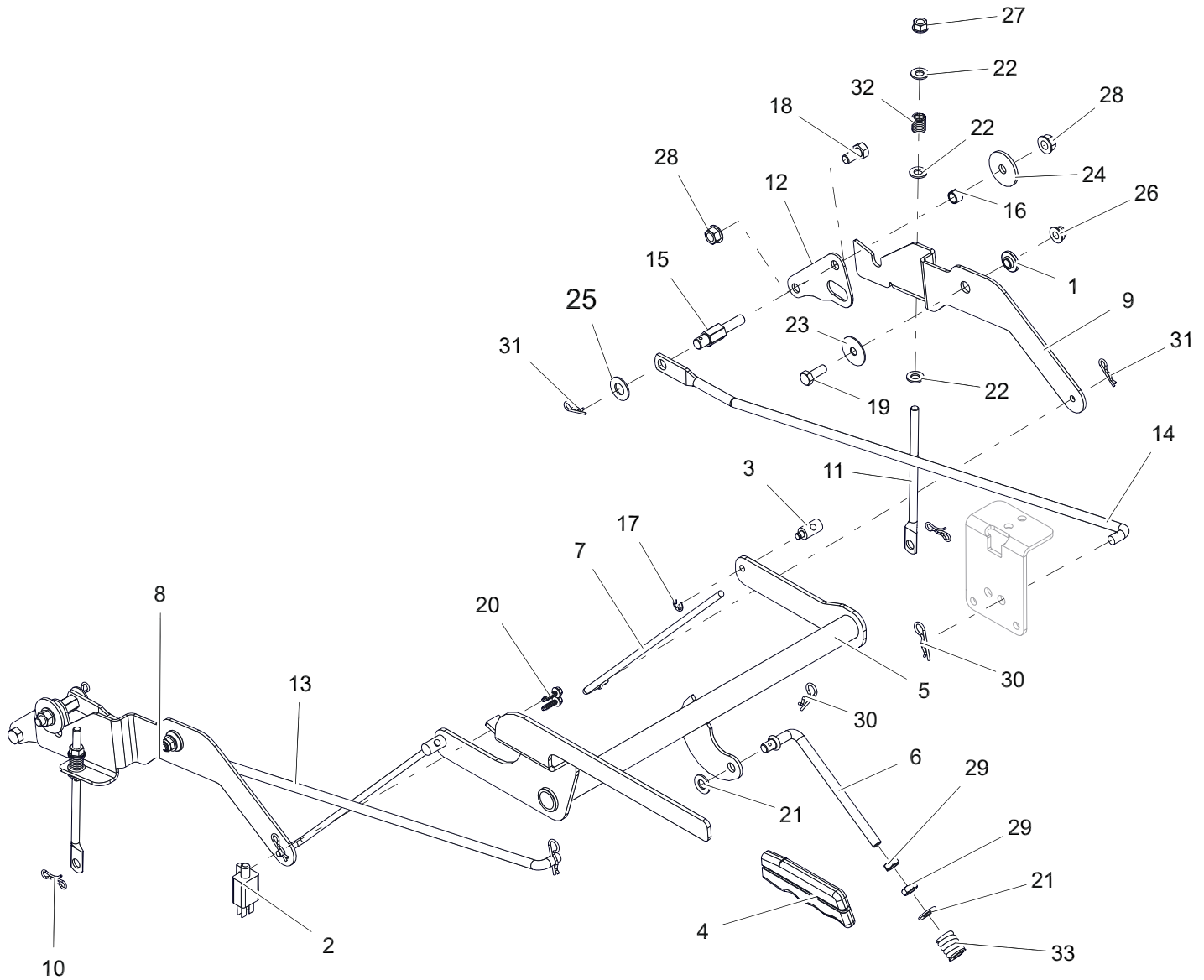


| BOM ID | Number | Qty | Description |
|--------|----------|-----|-------------------------------------|
| 1 | 05107153 | 1 | HANDLE, STEERING (RED) |
| 2 | 05107053 | 1 | HANDLE, STEERING - RH (RED) |
| 3 | 05179653 | 2 | ARM, CONTROL -UPPER (RED) |
| 4 | 09155500 | 1 | ARM, STEERING - LH LOWER (MACHINED) |
| 5 | 09155400 | 1 | ARM, STEERING - RH LOWER (MACHINED) |
| 6 | 05278900 | 2 | GRIP, GRAVELY HANDLEBAR |
| 7 | 06401130 | 4 | WSHR, FRICTION |
| 8 | 05501334 | 2 | BSHG-SLV .342 X .627 X 1.331 |
| 9 | 06500901 | 4 | NUT, FLG-CTR LK .375-16 GR5 ZC120 |
| 10 | 05901802 | 4 | BLT, HEX 0.3125-18X1 GR8 ZCC |
| 11 | 06300119 | 4 | WSHR,LK-REG 0.314 X 0.078 ZCC |
| 12 | 06500840 | 2 | NUT, FLG-CTR LK .312-18 GR5 ZCC |
| 13 | 07400124 | 4 | SCR-TAP .312-18X.50 HWH ZCC |
| 14 | 04764151 | 2 | BRKT, STEERING |

| BOM ID | Number | Qty | Description |
|--------|----------|-----|---------------------------------|
| 15 | 04990951 | 2 | BRKT, STEERING PIVOT |
| 16 | 05160400 | 2 | DAMPER, STRAIGHT MOUNT |
| 17 | 05171400 | 4 | COUPLER, DAMPER MOUNT |
| 18 | 05501001 | 4 | BUSHING FLANGE |
| 19 | 06100240 | 2 | SCR-SET, .312-18X1.000 |
| 20 | 05902030 | 2 | BLT, HEX 0.25-20X1.5F GR5 ZCC |
| 21 | 06200431 | 2 | BTL,RHSSN .313-18 X 2 G5 ZCC |
| 22 | 06200432 | 4 | BTL,RHSSN .375-16 X 0.75 G5 FPB |
| 23 | 06500904 | 4 | NUT, FLG-TOP LK .312-18 GR5 ZCC |
| 24 | 06500908 | 2 | NUT, JAM .250-20 G2 ZCC |
| 25 | 06500909 | 2 | NUT, JAM .312-18 GR5 ZCC |
| 26 | 06700222 | 4 | PIN, HAIR #213 .08X1.19 ZCC |

PARKING BRAKE

Models All

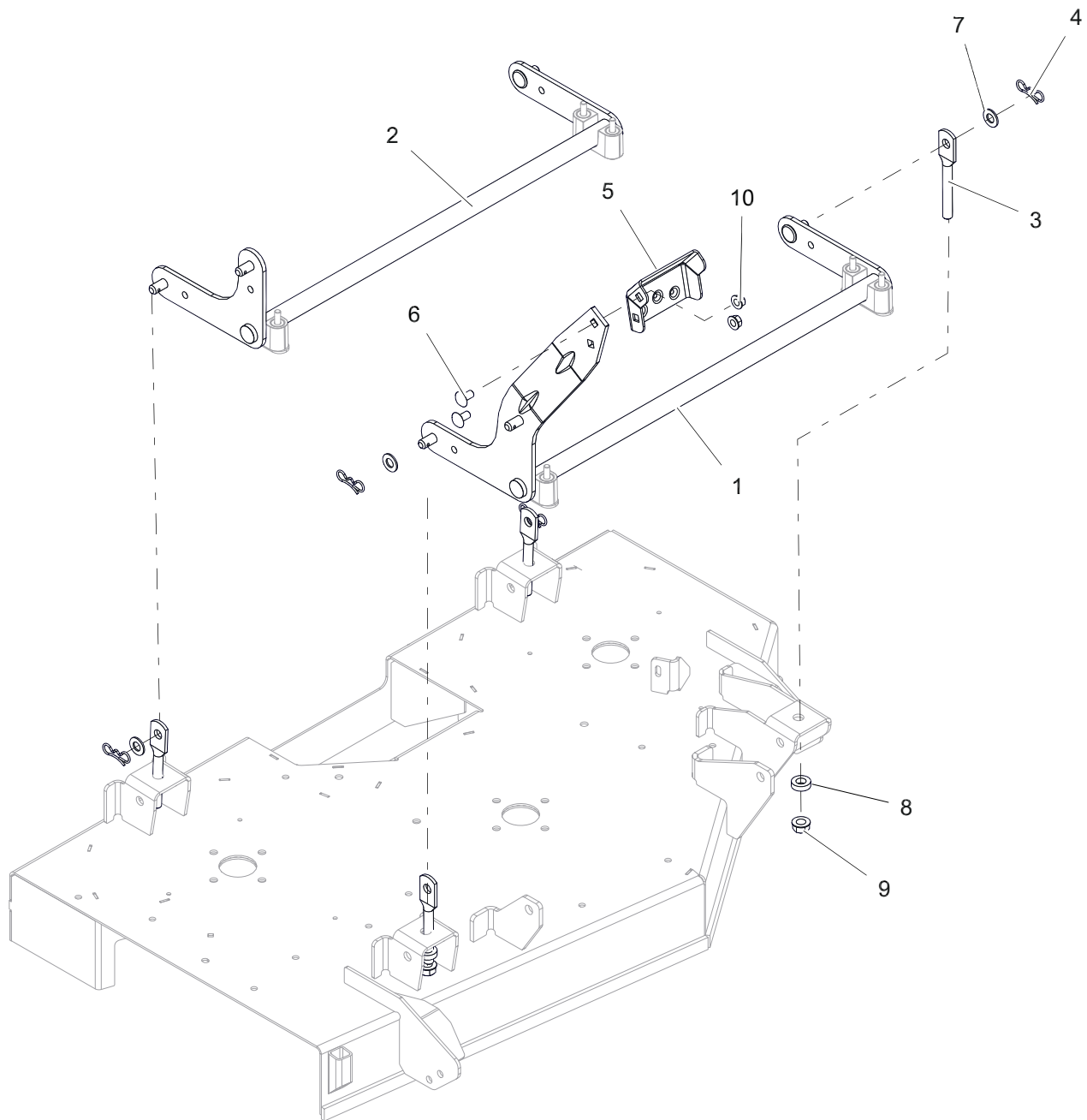


| BOM ID | Number | Qty | Description |
|--------|----------|-----|-------------------------------|
| 1 | 01305900 | 2 | SPACER FLANGED |
| 2 | 03606600 | 1 | SWITCH- DOUBLE POLE N.O./N.O. |
| 3 | 03764800 | 2 | TRUNNION, 1/4-20 |
| 4 | 05097200 | 1 | GRIP, PARKING BRAKE, GREY |
| 5 | 04787851 | 1 | WLDMT, BRAKE LEVER (BLACK) |
| 6 | 04787900 | 1 | LINK, OVER CENTER BRAKE |
| 7 | 04788000 | 2 | LINK, BRAKE ARM |
| 8 | 04788100 | 1 | INTERLOCK, RH BRAKE LINK |
| 9 | 04790400 | 1 | INTERLOCK, LH BRAKE LINK |
| 10 | 06700229 | 2 | PIN, BOWTIE #72 ZCC |
| 11 | 04790600 | 2 | LINK, BRAKE COG |
| 12 | 04799351 | 2 | PLATE, TRANSAXLE |
| 13 | 05245600 | 1 | LINKAGE, STEERING - RH |
| 14 | 05245700 | 1 | LINKAGE, STEERING - LH |
| 15 | 05245800 | 2 | STUD, STEERING LINK MOUNTING |
| 16 | 05501235 | 2 | SPCR, .385X.500X.350 |
| 17 | 05700125 | 2 | RING, RETAINING-E .25X.025 |

| BOM ID | Number | Qty | Description |
|--------|----------|-----|-------------------------------------|
| 18 | 05901702 | 2 | BLT, HEX 0.375-16X0.75 GR5 ZC120 |
| 19 | 05901801 | 2 | BLT, HEX 0.3125-18X0.875 GR5 ZCC |
| 20 | 06100232 | 2 | SCR, PLASTITE-HWH 0.2 X 0.75 ZC120 |
| 21 | 06401013 | 2 | WSHR-FL-STL 0.406X0.812X0.065 ZC120 |
| 22 | 06401017 | 6 | WSHR-FL-STL 0.344X0.688X0.065 ZC120 |
| 23 | 06401105 | 2 | WSHR-FL-STL 0.347X1.254X0.048 ZCC |
| 24 | 06401106 | 2 | WSHR-FL-STL 0.38X1.5X0.125 ZCC |
| 25 | 06401112 | 2 | WSHR-FL-STL 0.505X1X0.062 ZCC |
| 26 | 06500809 | 2 | NUT, LK-NYL-FLG .31-18 GR5 ZC120 |
| 27 | 06500840 | 2 | NUT, FLG-CTR LK .312-18 GR5 ZCC |
| 28 | 06500901 | 4 | NUT, FLG-CTR LK .375-16 GR5 ZC120 |
| 29 | 06500910 | 2 | NUT-JAM .375-16 GR2 ZCC |
| 30 | 06700219 | 3 | PIN, HAIR .09 X 1.50 ZCC |
| 31 | 06700222 | 4 | PIN, HAIR #213 .08X1.19 ZCC |
| 32 | 08300028 | 2 | SPRG, COMPRESSION |
| 33 | 08320900 | 1 | SPRG, COMPRESSION |

DECK LIFT

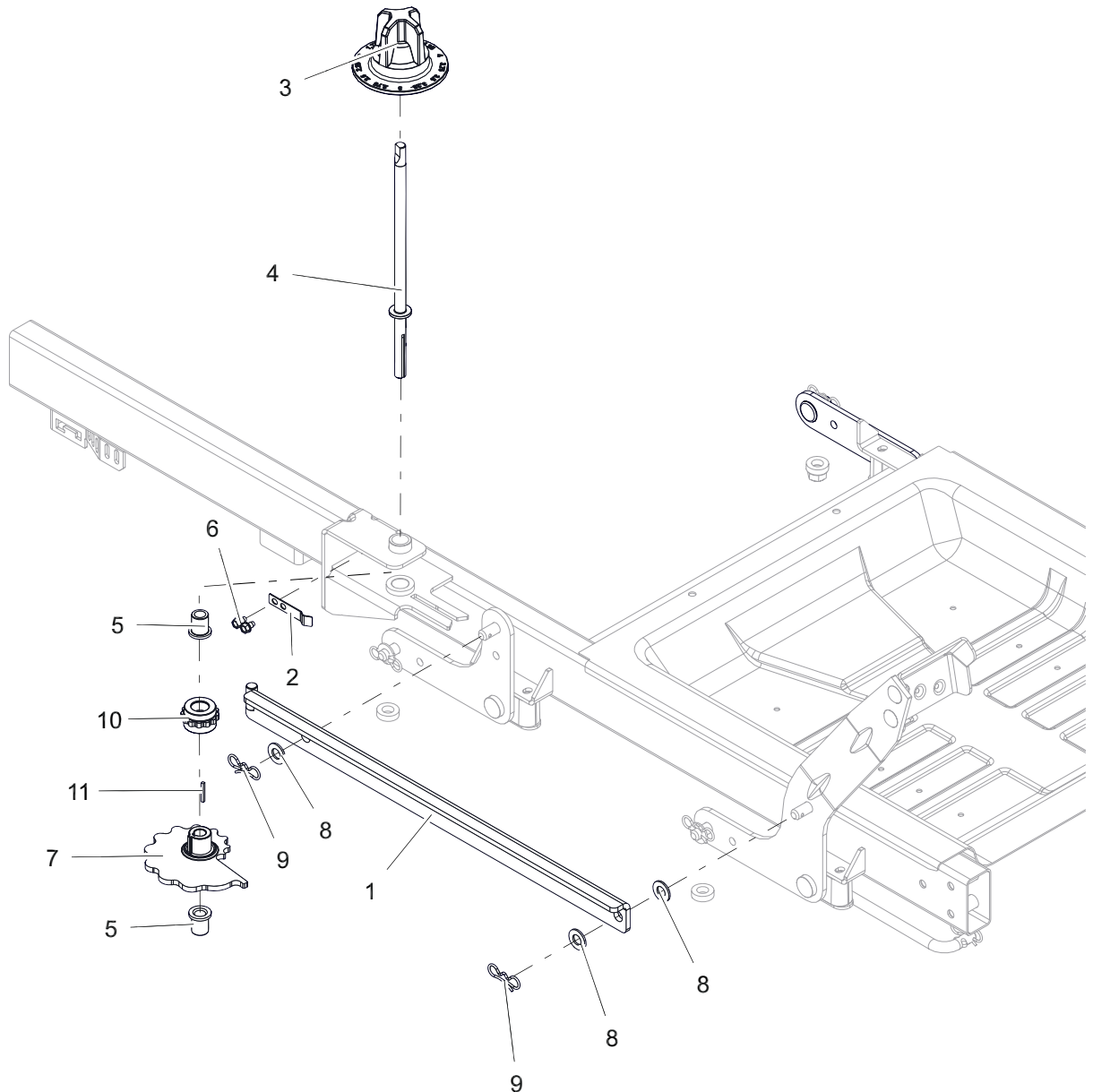
Models All



| BOM ID | Number | Qty | Description |
|--------|----------|-----|--------------------------------------|
| 1 | 05246051 | 1 | WLDMT, FRONT DECK LIFT PIVOT (BLACK) |
| 2 | 05246151 | 1 | WLDMT, REAR DECK LIFT PIVOT (BLACK) |
| 3 | 05113900 | 4 | LINK, DECK (HOLE-LONG) |
| 4 | 06700220 | 4 | PIN, BOWTIE LOCKING .091X1.875 ZCC |
| 5 | 04869251 | 1 | PEDAL, DECK LIFT (BOLT ON) |
| 6 | 06200432 | 2 | BTL,RHSSN .375-16 X 0.75 G5 FPB |
| 7 | 06443300 | 4 | WSHR-FL-NYL .518X1.00X.08 |
| 8 | 07500417 | 4 | WSHR, RUBBER |
| 9 | 06500902 | 4 | NUT, FLG-CTR LK .500-13 GF ZCC |
| 10 | 06500901 | 2 | NUT, FLG-CTR LK .375-16 GR5 ZC120 |

HEIGHT OF CUT

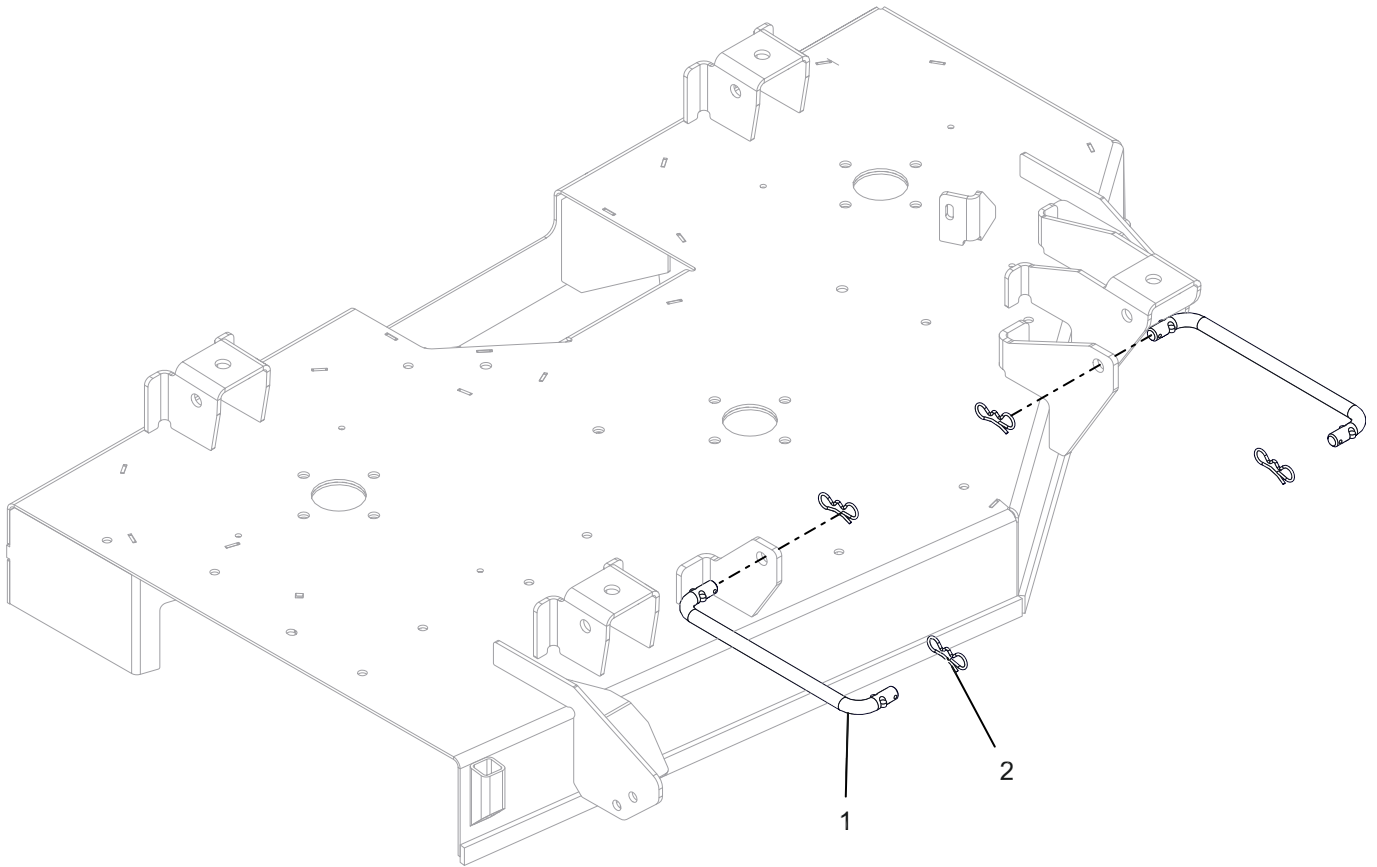
Models All



| BOM ID | Number | Qty | Description |
|--------|----------|-----|------------------------------------|
| 1 | 04741751 | 1 | WLDMT, HOC LINK |
| 2 | 04742100 | 1 | ARM, HOC DETENT |
| 3 | 05091700 | 1 | KNOB, HOC DIAL |
| 4 | 09361500 | 1 | SHAFT, CAM |
| 5 | 05501218 | 2 | BUSHING, FLANGE .503X.75X.875X1.0 |
| 6 | 07400125 | 2 | SCR-TAP .25-20X.38 HWH ZCC |
| 7 | 05165900 | 1 | CAM, HOC (PM) |
| 8 | 06443300 | 3 | WSHR-FL-NYL .518X1.00X.08 |
| 9 | 06700220 | 2 | PIN, BOWTIE LOCKING .091X1.875 ZCC |
| 10 | 07500422 | 1 | GEAR, HOC INDEX |
| 11 | 06600211 | 1 | KEY, 1/8 X 1/8 X 1.0 REV |

DECK MOUNT

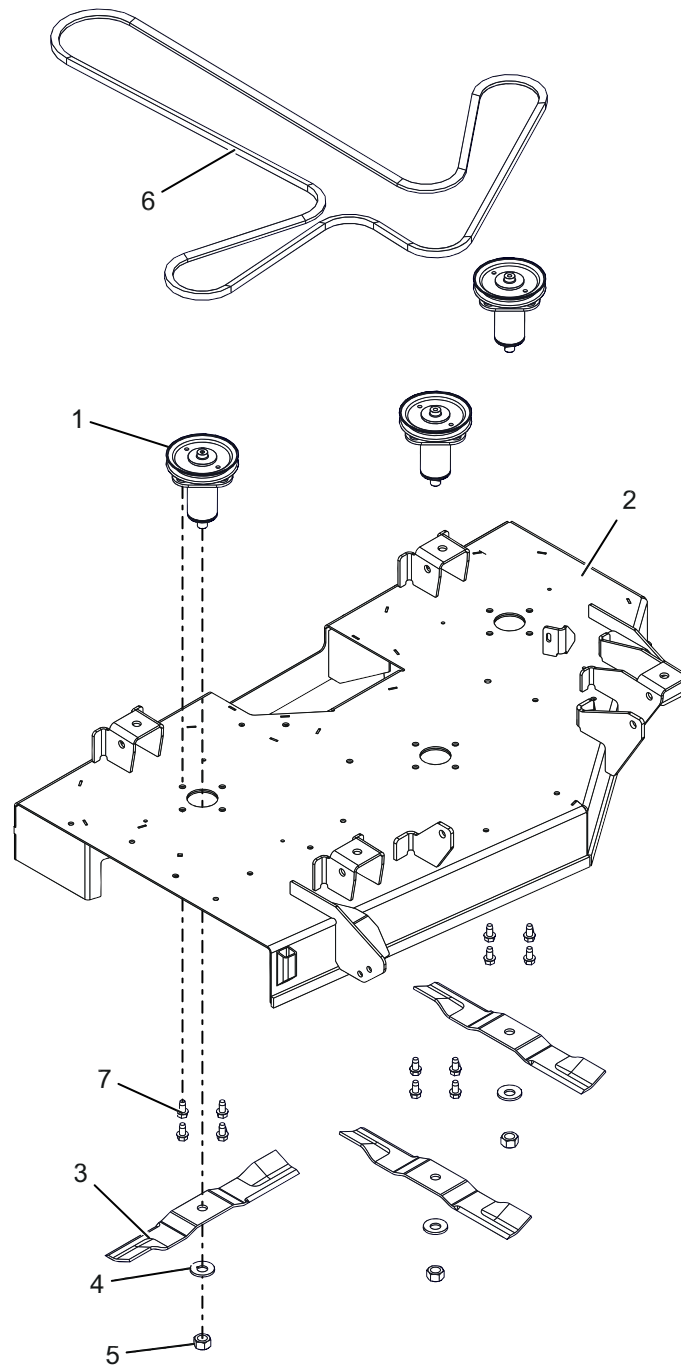
Models All



| BOM ID | Number | Qty | Description |
|--------|----------|-----|------------------------------------|
| 1 | 02004500 | 2 | LINK, DRAG |
| 2 | 06700220 | 4 | PIN, BOWTIE LOCKING .091X1.875 ZCC |

DECK, BELT, BLADES AND SPINDLES – 42"

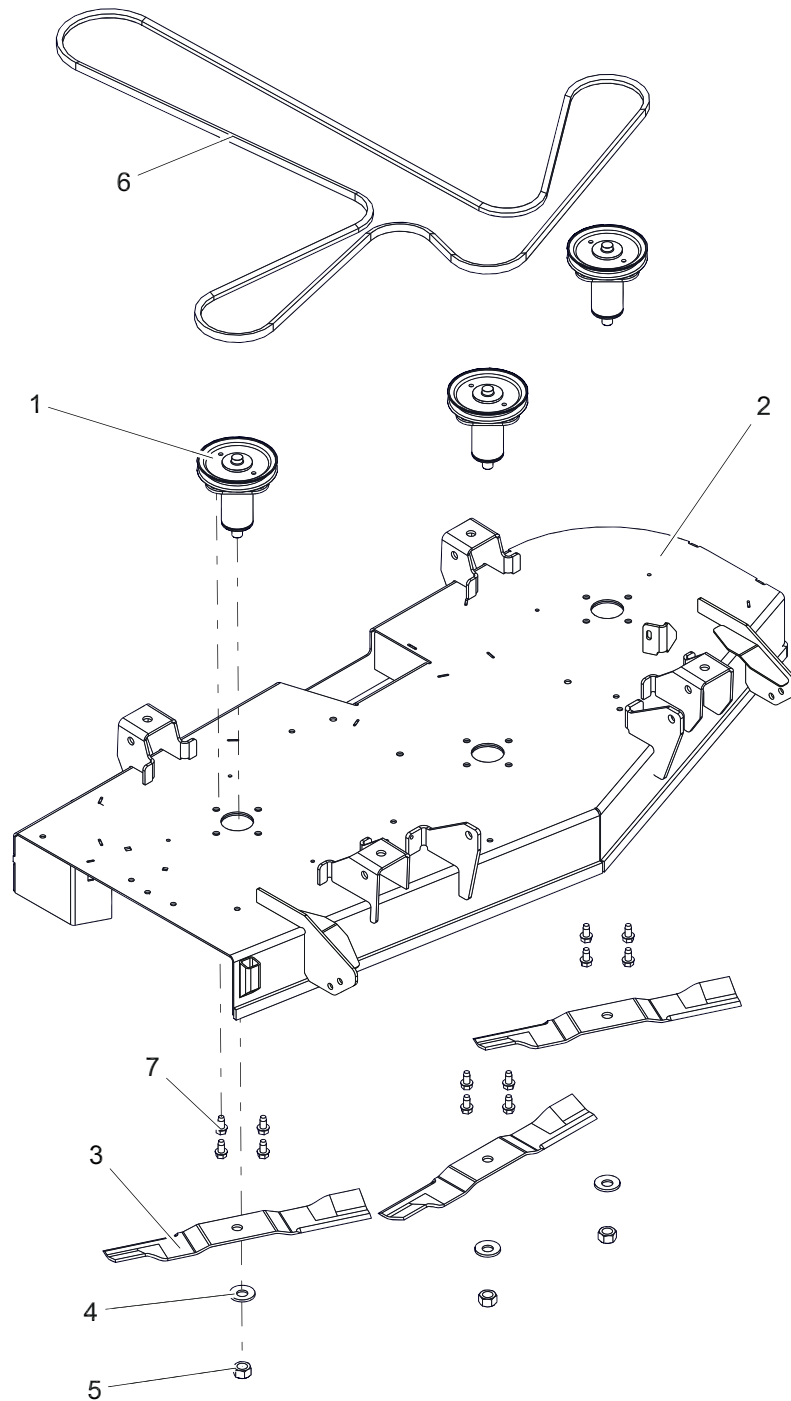
Models 915255



| BOM ID | Number | Qty | Description |
|--------|----------|-----|---|
| 1 | 51527900 | 3 | ASM, SPINDLE |
| 2 | 51532200 | 1 | WLDMT, DECK 42" (RED) |
| 3 | 04769800 | 3 | BLADE, MOWER |
| 4 | 06445700 | 3 | WSHR, BLVL-.63X1.625X.14 |
| 5 | 06500920 | 3 | NUT, HEX .625-18 ZCC |
| 6 | 07200523 | 1 | V-Belt, HA-WRAPPED CLUTCHING (NO RUBBER BLEED THRU) |
| 7 | 07400129 | 12 | SCR-TAP .38-16X.75 HWH ZCC |

DECK, BELT, BLADES AND SPINDLES – 48"

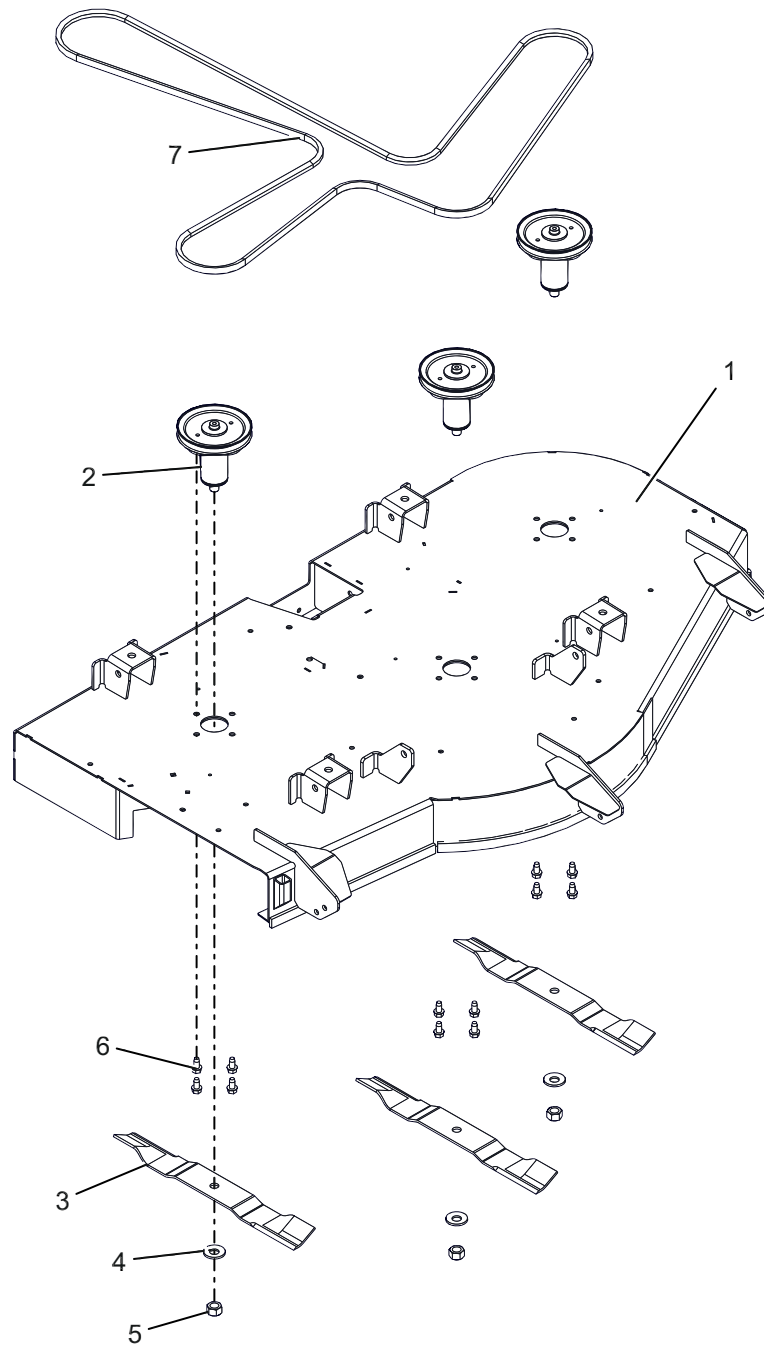
Models 915276



| BOM ID | Number | Qty | Description |
|--------|----------|-----|----------------------------|
| 1 | 51534800 | 3 | ASM, SPINDLE |
| 2 | 51536300 | 1 | WLDMT, DECK 48" |
| 3 | 05284800 | 3 | BLADE, MOWER - 16.19" LG |
| 4 | 06445700 | 3 | WSHR, BLVL-.63X1.625X.14 |
| 5 | 06500920 | 3 | NUT, HEX .625-18 ZCC |
| 6 | 07241600 | 1 | V-BELT, HA-WRAPPED |
| 7 | 07400129 | 12 | SCR-TAP .38-16X.75 HWH ZCC |

DECK, BELT, BLADES AND SPINDLES – 52"

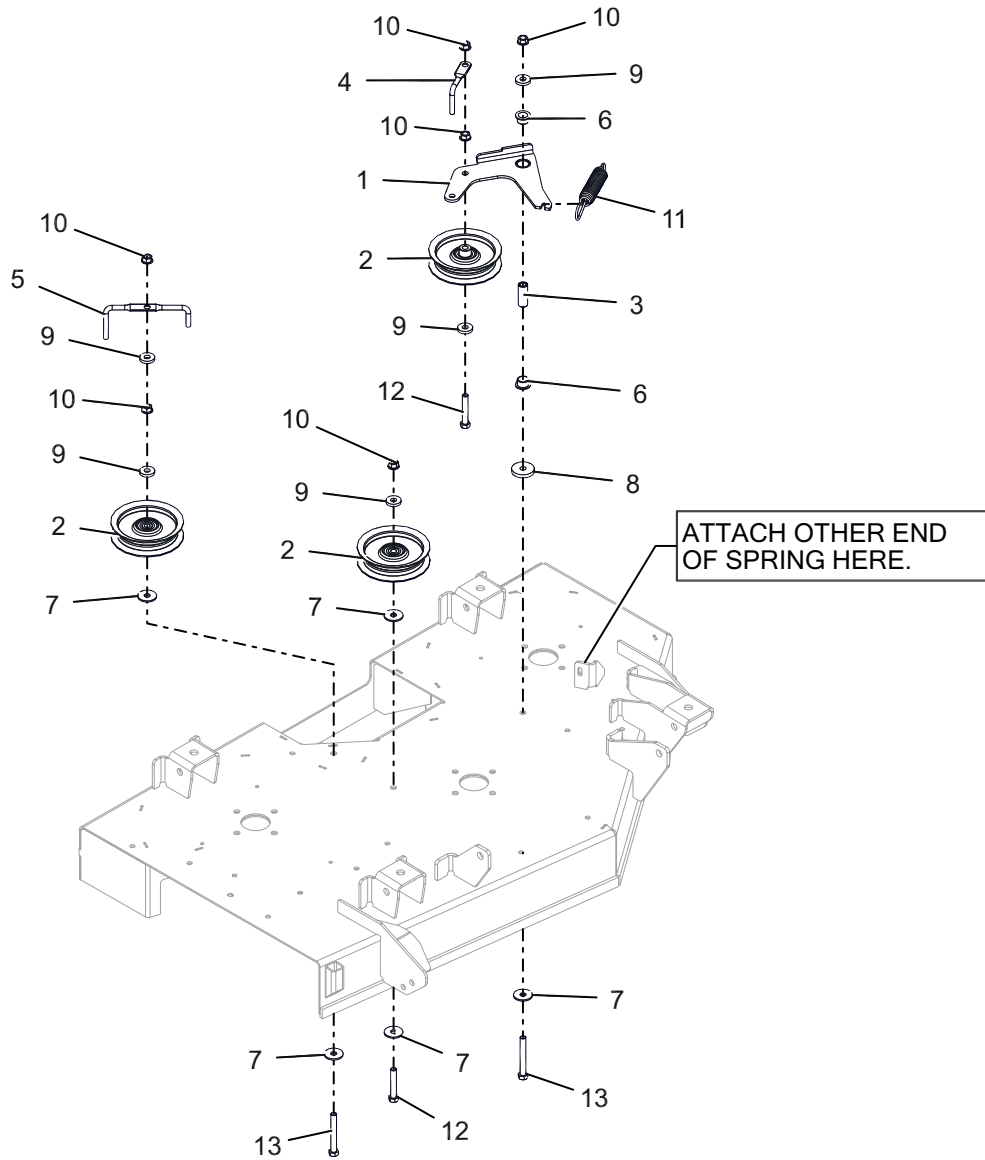
Models 915256, 257



| BOM ID | Number | Qty | Description |
|--------|----------|-----|-----------------------------------|
| 1 | 51532400 | 1 | KIT, GRAVELY DECK 52" WITH DECALS |
| 2 | 51528000 | 3 | ASM, SPINDLE |
| 3 | 04771200 | 3 | BLADE, 18" - 20 DEG .5 OFFSET |
| 4 | 06445700 | 3 | WSHR, BLVL-.63X1.625X.14 |
| 5 | 06500920 | 3 | NUT, HEX .625-18 ZCC |
| 6 | 07400129 | 12 | SCR-TAP .38-16X.75 HWH ZCC |
| 7 | 07200023 | 1 | V-BELT, HA-WRAPPED |

IDLERS AND SHEAVES – 42"

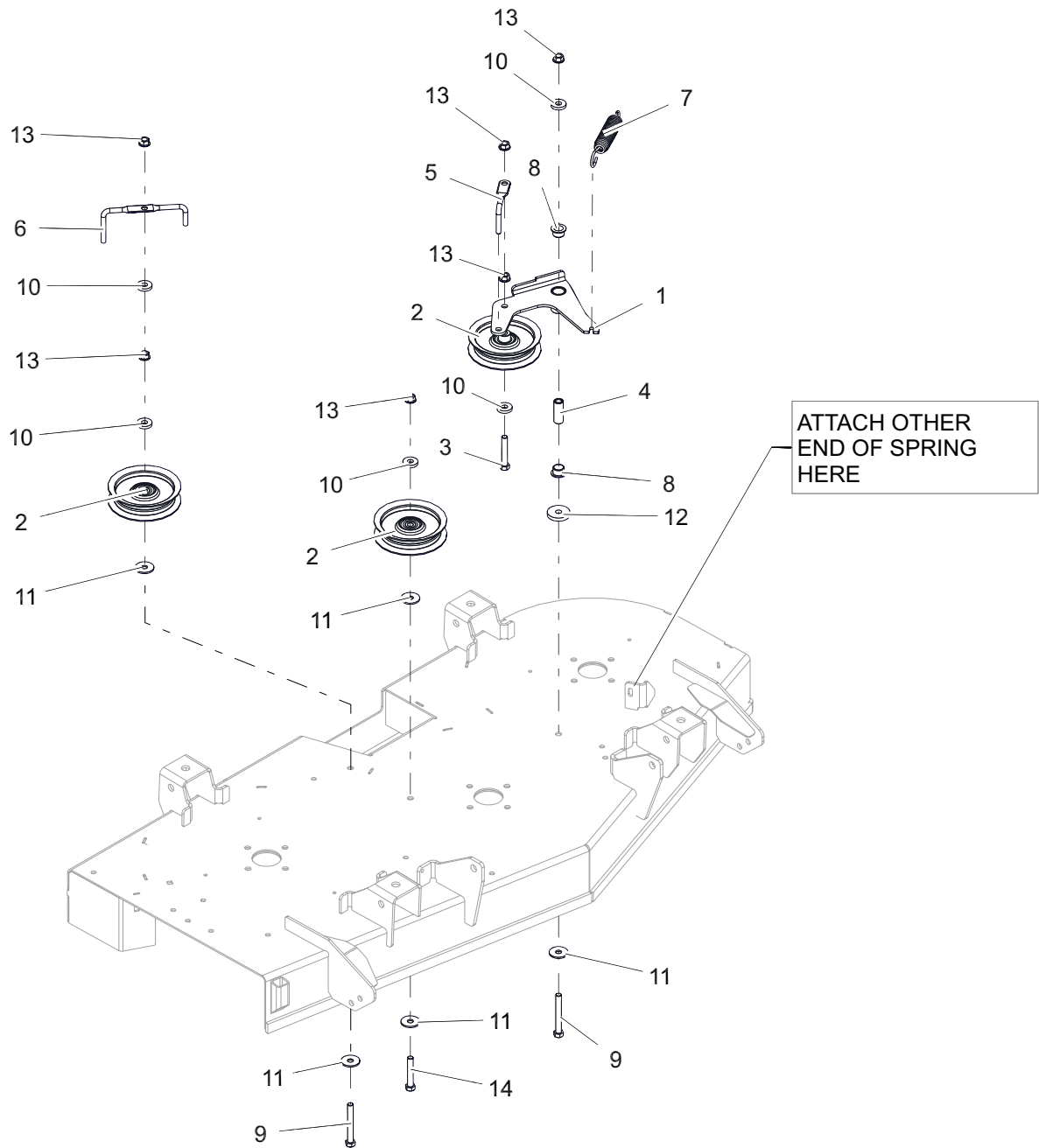
Models 915255



| BOM ID | Number | Qty | Description |
|--------|----------|-----|-----------------------------------|
| 1 | 04773353 | 1 | WLDMT, IDLER ARM (RED) |
| 2 | 07350100 | 3 | IDLER, FLAT - 4.06" X .75" |
| 3 | 03763400 | 1 | SPCR, .375IDX.625ODX1.66 PM |
| 4 | 03828800 | 1 | WIREFORM, BELT FINGER |
| 5 | 03974100 | 1 | FINGER, BELT |
| 6 | 05500907 | 2 | BSHG, FLANGE |
| 7 | 06401021 | 5 | WSHR-FL-STL 0.406X1.25X0.1 ZCC |
| 8 | 06401110 | 1 | WSHR-FL-STL 0.406X1.5X0.245 ZCC |
| 9 | 06401108 | 5 | WSHR-FL-STL 0.406X1X0.188 ZCC |
| 10 | 06500901 | 6 | NUT, FLG-CTR LK .375-16 GR5 ZC120 |
| 11 | 08320300 | 1 | SPRG, EXTENSION |
| 12 | 05901640 | 2 | BLT, HEX 0.375-16X2.25 GR5 ZC120 |
| 13 | 05901815 | 2 | BLT, HEX 0.375-16X3F GR5 ZCC |

IDLERS AND SHEAVES – 48"

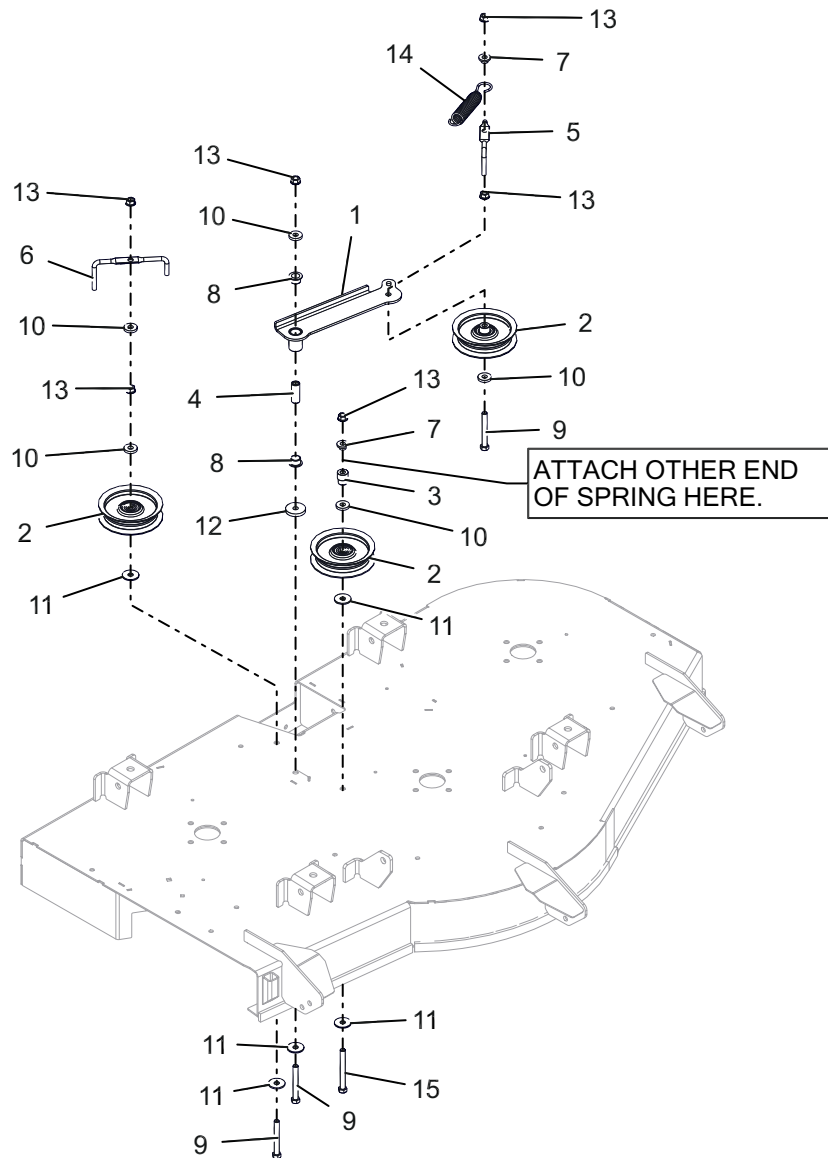
Models 915276



| BOM ID | Number | Qty | Description |
|--------|----------|-----|--------------------------------------|
| 1 | 04773353 | 1 | WLDMT, IDLER ARM (RED) |
| 2 | 07350100 | 3 | IDLER, FLAT - 4.06" X .75" |
| 3 | 05901640 | 1 | BLT, HEX 0.375-16X2.25 GR5 ZC120 |
| 4 | 03763400 | 1 | SPACER SLEEVED .375IDX.625ODX1.66 PM |
| 5 | 03828800 | 1 | WIREFORM, BELT FINGER |
| 6 | 03974100 | 1 | FINGER, BELT |
| 7 | 08320300 | 1 | SPRG, EXTENSION |
| 8 | 05500907 | 2 | BSHG, FLANGE |
| 9 | 05901815 | 2 | BLT, HEX 0.375-16X3F GR5 ZCC |
| 10 | 06401108 | 5 | WSHR-FL-STL 0.406X1X0.188 ZCC |
| 11 | 06401021 | 5 | WSHR-FL-STL 0.406X1.25X0.1 ZCC |
| 12 | 06401110 | 1 | WSHR-FL-STL 0.406X1.5X0.245 ZCC |
| 13 | 06500901 | 6 | NUT, FLG-CTR LK .375-16 GR5 ZC120 |
| 14 | 05901640 | 1 | BLT, HEX 0.375-16X2.25 GR5 ZC120 |

IDLERS AND SHEAVES – 52"

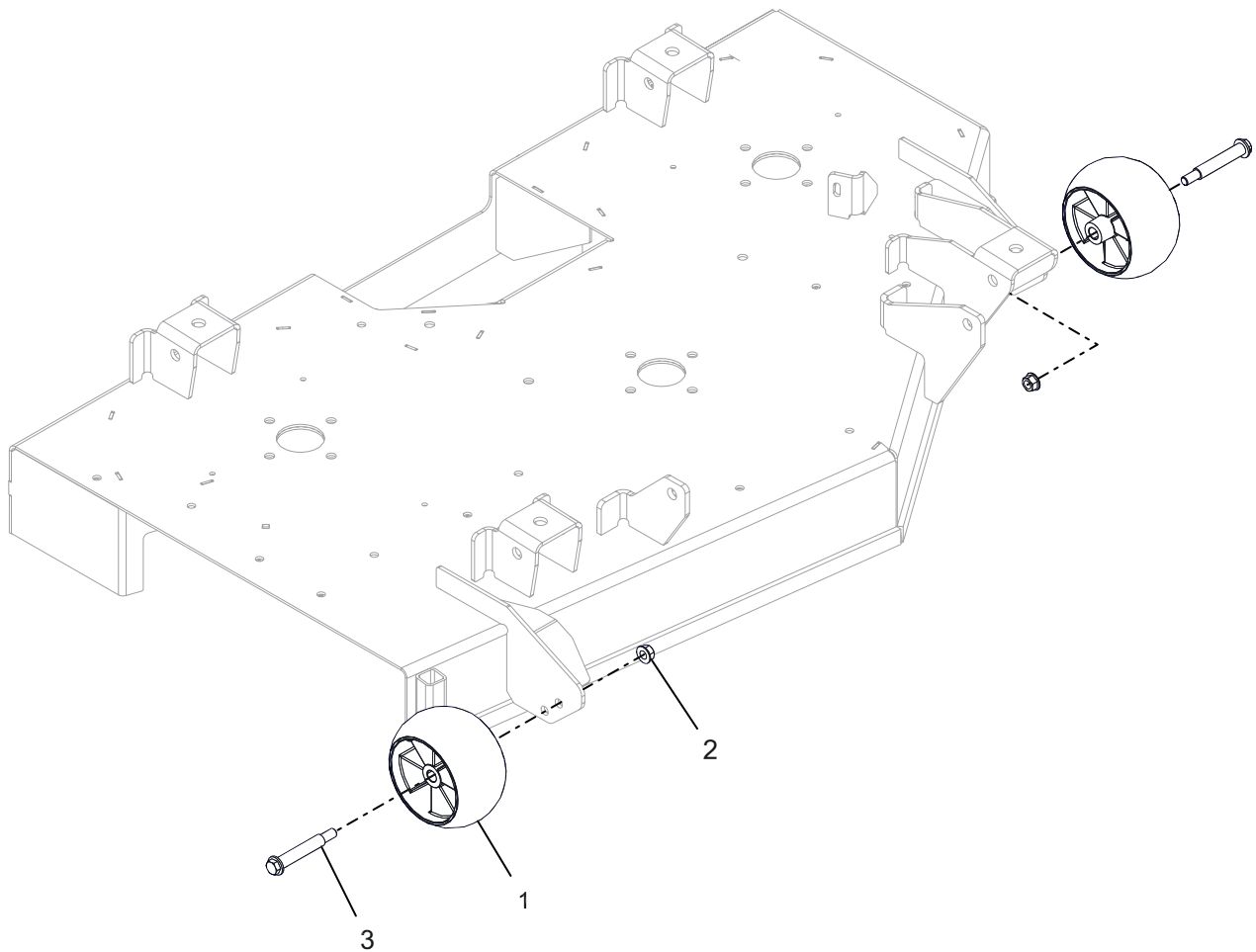
Models 915256, 257



| BOM ID | Number | Qty | Description |
|--------|----------|-----|-------------------------------------|
| 1 | 04795653 | 1 | WLDMT, IDLER - 52" IDLER ARM |
| 2 | 07350100 | 3 | IDLER, FLAT - 4.06" X .75" |
| 3 | 00679300 | 1 | BUSHING, IDLER |
| 4 | 03763400 | 1 | SPCR, .375IDX.625ODX1.66 PM |
| 5 | 03856800 | 1 | WIREFORM, BELT |
| 6 | 03974100 | 1 | FINGER, BELT |
| 7 | 05500435 | 2 | BSHG, FLG .385 X .500 X .875 X .406 |
| 8 | 05500907 | 2 | BSHG, FLANGE |
| 9 | 05901815 | 3 | BLT, HEX 0.375-16X3F GR5 ZCC |
| 10 | 06401108 | 5 | WSHR-FL-STL 0.406X1X0.188 ZCC |
| 11 | 06401021 | 5 | WSHR-FL-STL 0.406X1.25X0.1 ZCC |
| 12 | 06401110 | 1 | WSHR-FL-STL 0.406X1.5X0.245 ZCC |
| 13 | 06500901 | 6 | NUT, FLG-CTR LK .375-16 GR5 ZC120 |
| 14 | 08320300 | 1 | SPRG, EXTENSION |
| 15 | 05901818 | 1 | BLT, HEX 0.375-16X3.5 GR5 ZCC |

ANTI-SCALP ROLLERS – 42"

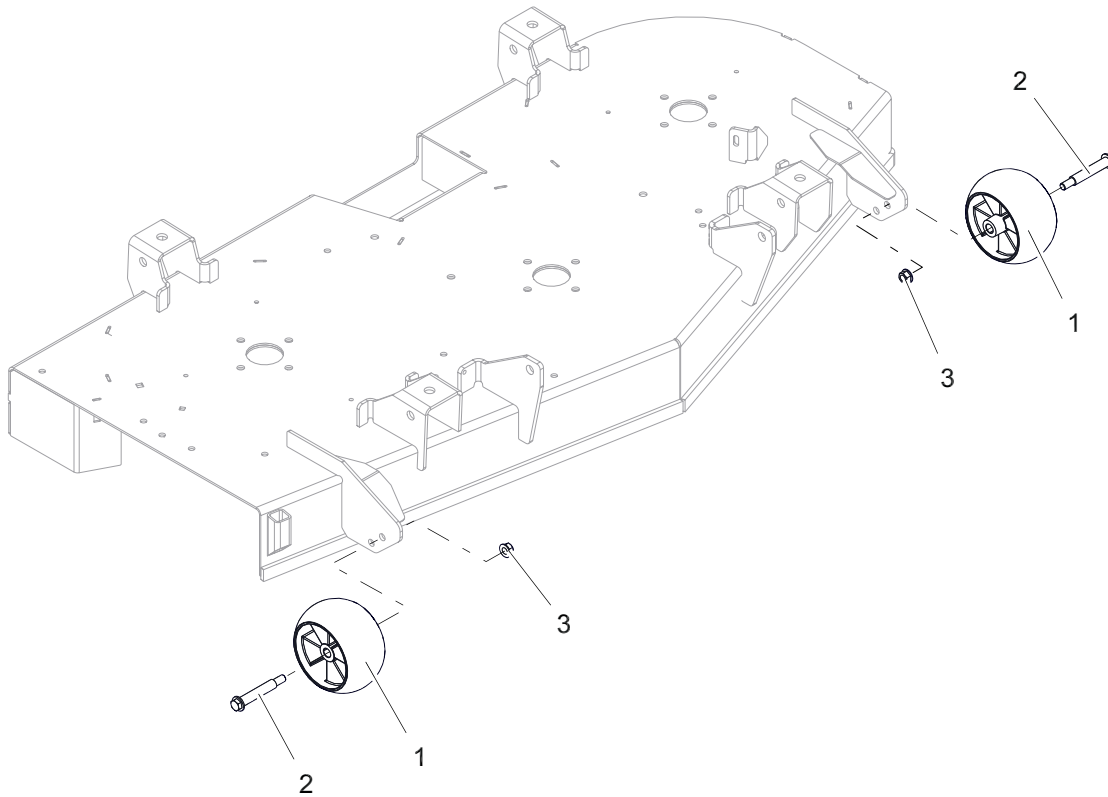
Models 915255



| BOM ID | Number | Qty | Description |
|--------|----------|-----|-----------------------------------|
| 1 | 03905600 | 2 | ANTI-SCALP WHEEL - 5XOS |
| 2 | 06500822 | 2 | NUT, FLG-TOP LK .375-16 GRF ZC120 |
| 3 | 07056800 | 2 | BLT-SHLDR .38-16X2.50 HWH G5 ZCC |

ANTI-SCALP ROLLERS – 48"

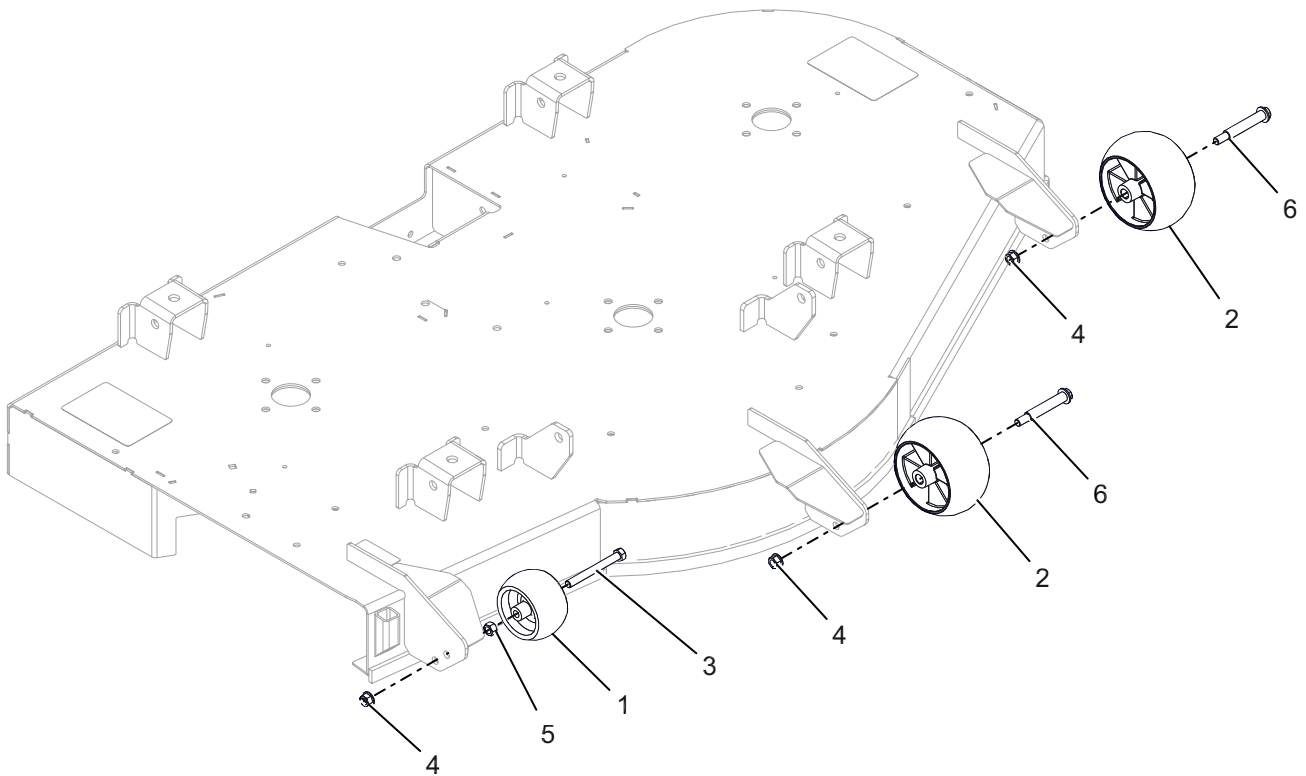
Models 915276



| BOM ID | Number | Qty | Description |
|--------|----------|-----|-----------------------------------|
| 1 | 03905600 | 2 | WHEEL, ANTI SCALP - 5XOS |
| 2 | 07056800 | 2 | BLT-SHLDR .38-16X2.50 HWH G5 ZCC |
| 3 | 06500901 | 2 | NUT, FLG-CTR LK .375-16 GR5 ZC120 |

ANTI-SCALP ROLLERS – 52"

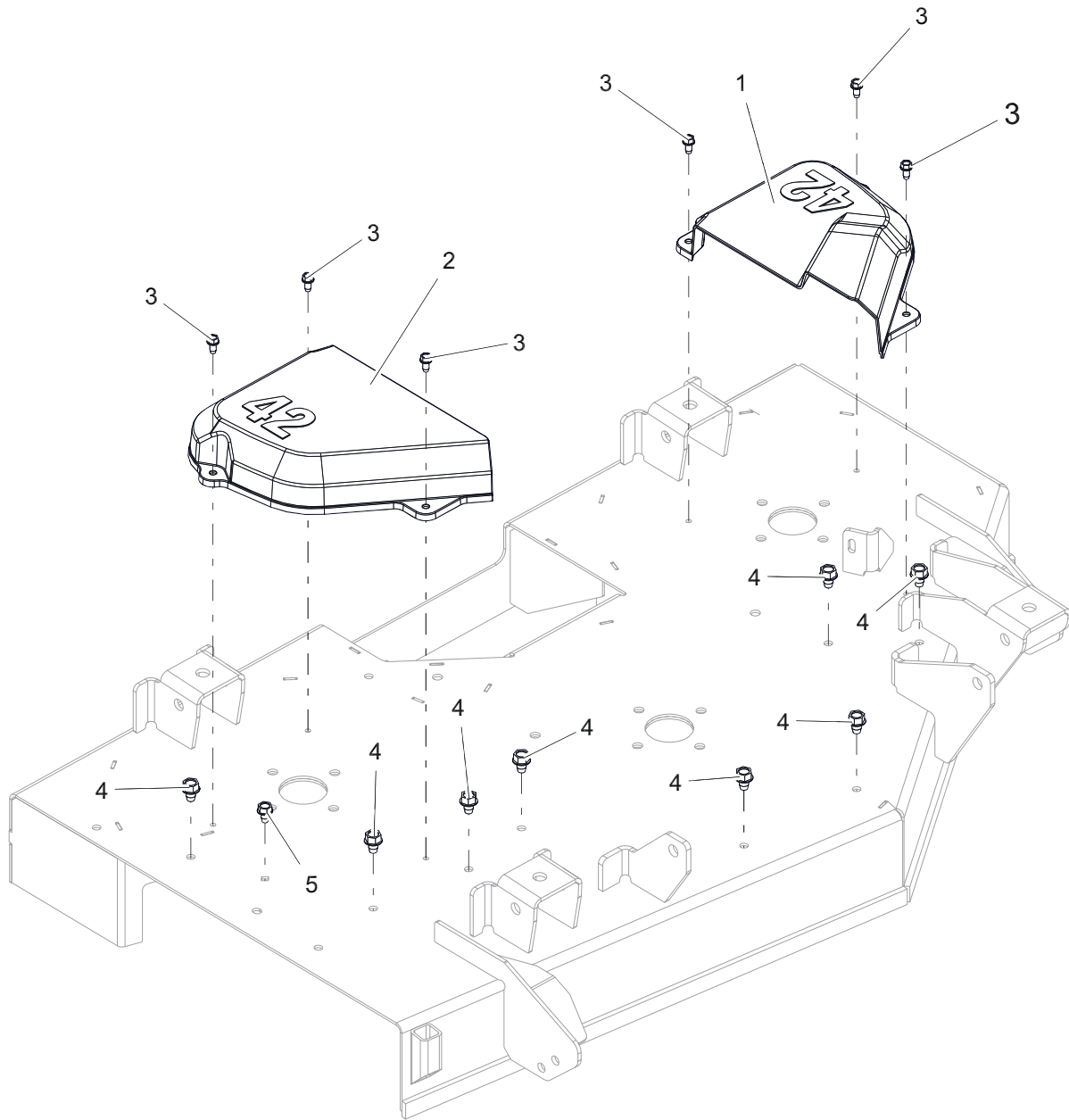
Models 915256, 257



| BOM ID | Number | Qty | Description |
|--------|----------|-----|-----------------------------------|
| 1 | 02745400 | 1 | ROLLER |
| 2 | 03905600 | 2 | WHEEL, ANTI SCALP - 5XOS |
| 3 | 05901818 | 1 | BLT, HEX 0.375-16X3.5 GR5 ZCC |
| 4 | 06500901 | 3 | NUT, FLG-CTR LK .375-16 GR5 ZC120 |
| 5 | 06500917 | 1 | NUT, STD .375-16 GR2 ZCC |
| 6 | 07056800 | 2 | BLT-SHLDR .38-16X2.50 HWH G5 ZCC |

BELT COVERS – 42"

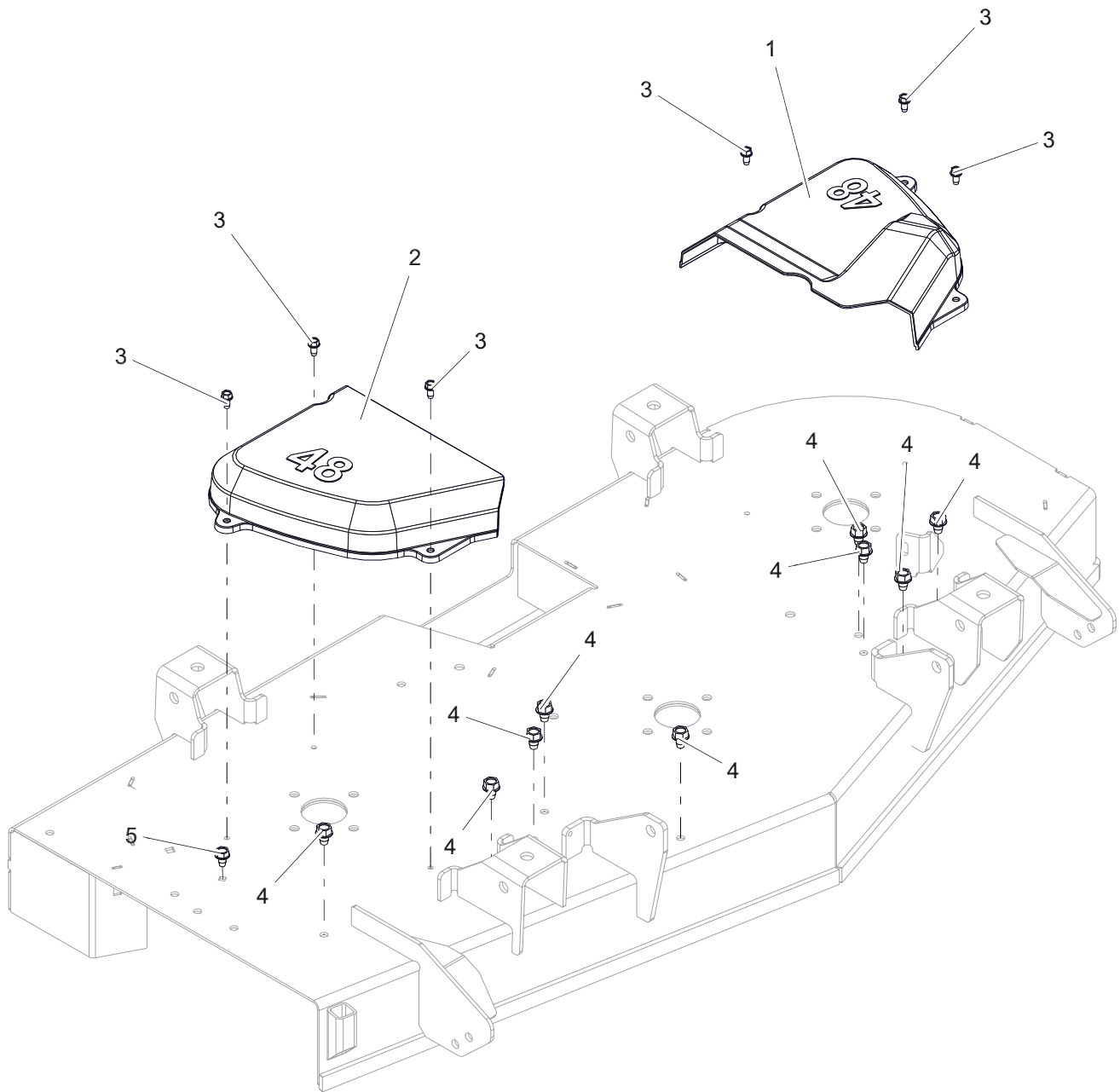
Models 915255



| BOM ID | Number | Qty | Description |
|--------|----------|-----|-----------------------------|
| 1 | 04789100 | 1 | COVER, BELT 42" LEFT |
| 2 | 04789200 | 1 | COVER, BELT 42" RIGHT |
| 3 | 07400122 | 6 | SCR-TAP .25-20X.50 HWH ZCC |
| 4 | 07400126 | 8 | SCR-TAP .38-16X.500 HWH ZCC |
| 5 | 07400124 | 1 | SCR-TAP .312-18X.50 HWH ZCC |

BELT COVERS – 48"

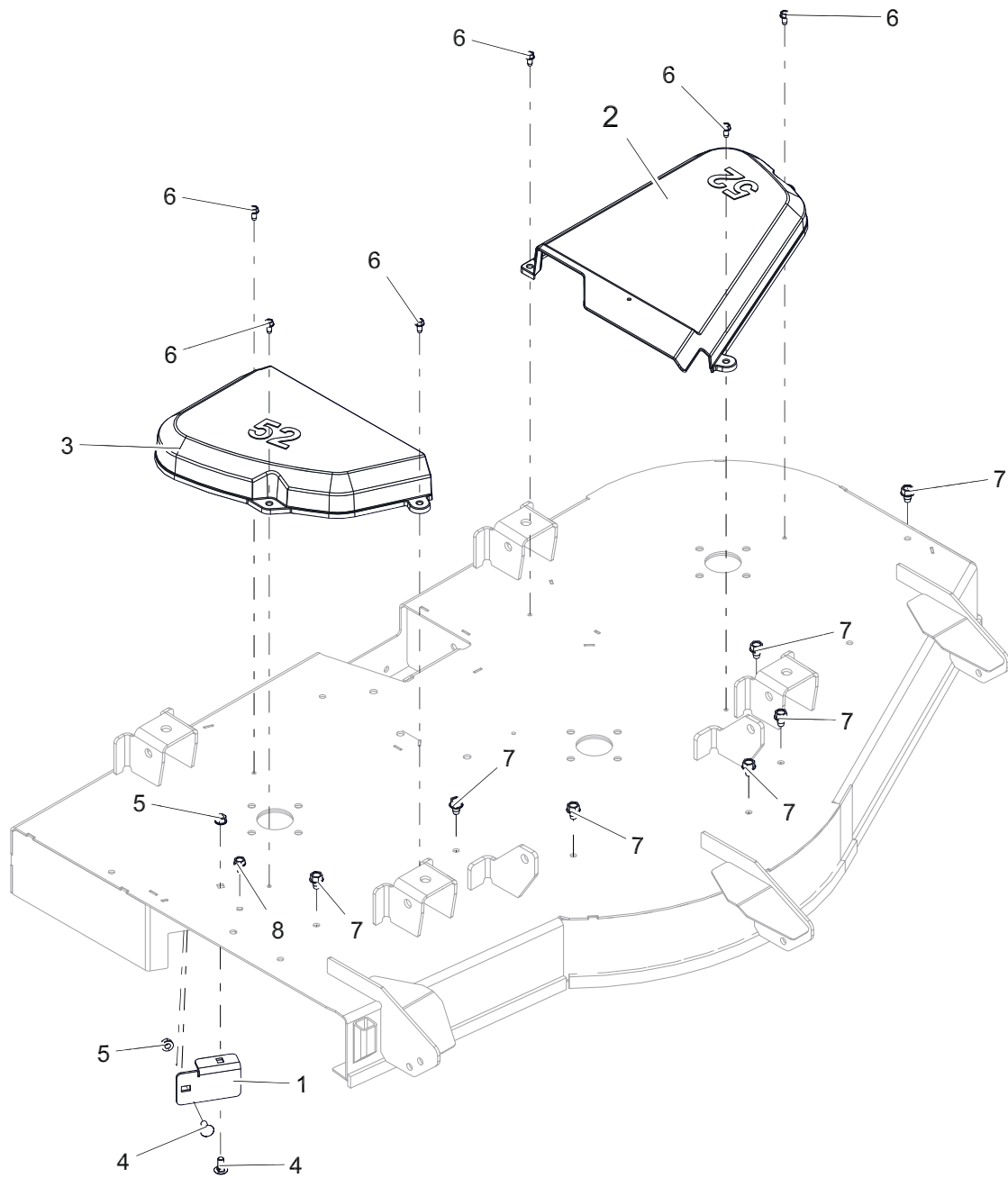
Models 915276



| BOM ID | Number | Qty | Description |
|--------|----------|-----|-----------------------------|
| 1 | 05268000 | 1 | COVER, BELT 48" LH |
| 2 | 05268100 | 1 | COVER, BELT 48 RH |
| 3 | 07400122 | 6 | SCR-TAP .25-20X.50 HWH ZCC |
| 4 | 07400126 | 9 | SCR-TAP .38-16X.500 HWH ZCC |
| 5 | 07400124 | 1 | SCR-TAP .312-18X.50 HWH ZCC |

BELT COVERS – 52"

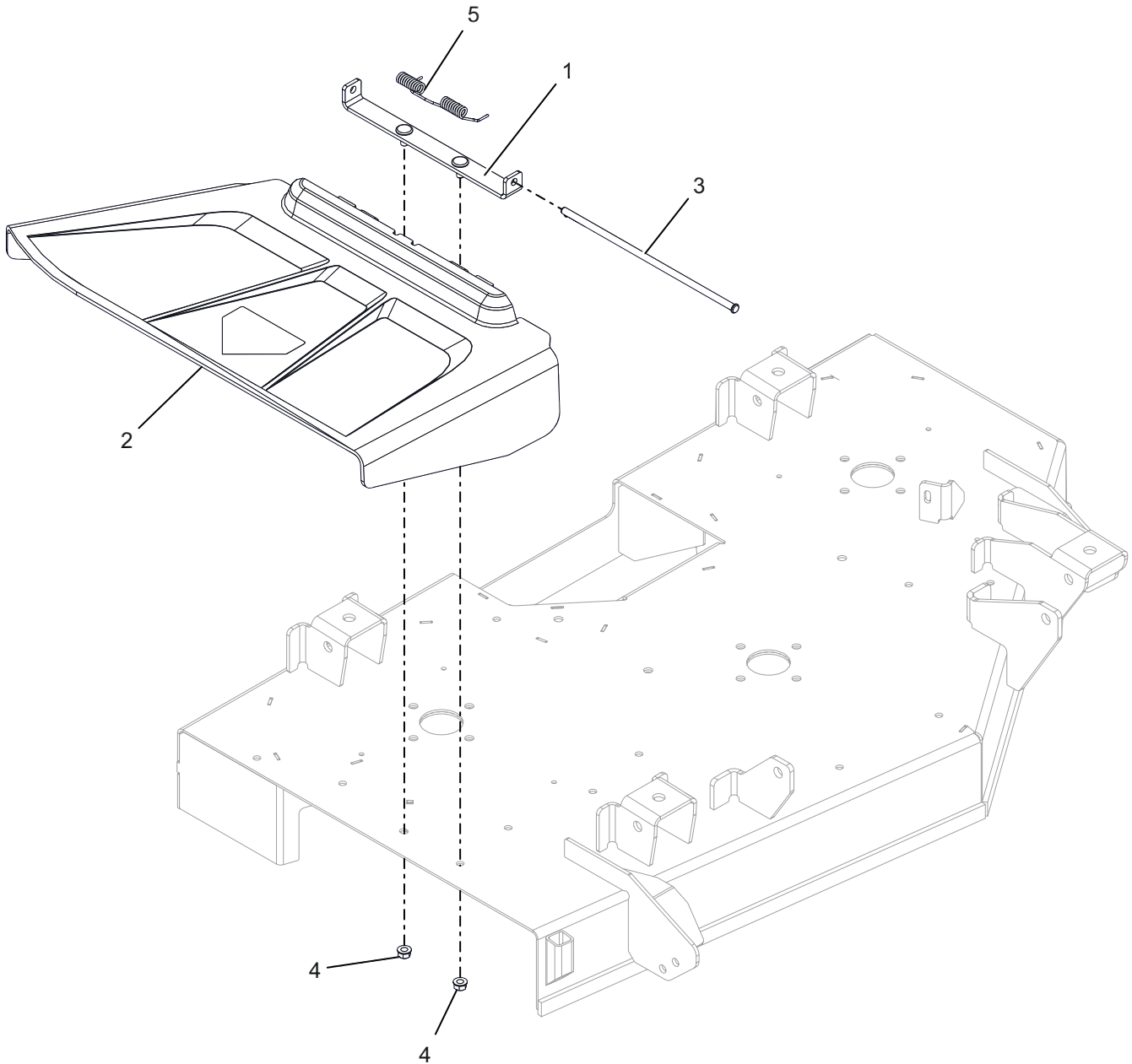
Models 915256, 257



| BOM ID | Number | Qty | Description |
|--------|----------|-----|---------------------------------|
| 1 | 04771653 | 1 | STRIP, DEFLECTOR |
| 2 | 04792900 | 1 | COVER, BELT 52" LH |
| 3 | 04793300 | 1 | COVER, BELT 52" RIGHT |
| 4 | 06200232 | 2 | BTL,RHSN .313-18 X 0.75 G5 ZCC |
| 5 | 06500904 | 2 | NUT, FLG-TOP LK .312-18 GR5 ZCC |
| 6 | 07400122 | 6 | SCR-TAP .25-20X.50 HWH ZCC |
| 7 | 07400126 | 7 | SCR-TAP .38-16X.500 HWH ZCC |
| 8 | 07400124 | 1 | SCR-TAP .312-18X.50 HWH ZCC |

CHUTE

Models All



| BOM ID | Number | Qty | Description |
|--------|----------|-----|---------------------------------|
| 1 | 04799800 | 1 | WLDMT, |
| 2 | 04795000 | 1 | CHUTE, SIDE DISCHARGE |
| 3 | 06800205 | 1 | PIN, SLIC-.312X10.45 |
| 4 | 06500904 | 2 | NUT, FLG-TOP LK .312-18 GR5 ZCC |
| 5 | 08300621 | 1 | SPRG, TORSION .35 ID (CHUTE) |

NOTES



655 West Ryan Street
Brillion, WI 54110

gravelly.com



ARIENS|CO